



# PDC

## Power Drive Counterbalanced Trucks

This series represents the walkie lift truck version of the sit-down rider lift truck. Ideal choice when handling or staging a variety of load sizes.



### CAPACITY

1500 lbs. to 4000 lbs. 24" load centers

### BATTERY

24-volt industrial battery. Battery compartment dimensions are:

PDC 15/20A: 31.62" x 6.8" x open

PDC 20/25: 25.6" x 11.5" x open

PDC 30/40: 30.87" x 13.18" x open

A-15, SB-175 gray connector

### PERFORMANCE

Resistor three speeds forward and reverse

### TRAVEL

From 0 mph to 3.0 mph empty

From 0 mph to 2.8 mph loaded

### LIFT

Up to 42 fpm empty

Up to 22 fpm loaded

### LOWERING

Up to 28 fpm empty

Up to 56 fpm loaded

### DUAL TILT CYLINDERS

3° forward 9° back

### CLASS II ITA FORKS

PDC: 36", 42" 48" x 4" x 1.5" thick

PDC-40: 36", 42" 48" x 4" x 1.75" thick

### TIRES

#### DRIVE WHEEL

10.5" x 5" crowned polyurethane

#### LOAD WHEELS

5" x 5" polyurethane

### CONTROL HANDLE "All Steel"

Designed to allow smooth operation with either hand. Protective wraparound hand guard, rubber hand grips, horn, "Belly Button" reversing switch, thumb and twist grip travel control are all standard.

### HYDRAULICS

The dashboard mounted lift and lower lever allow uncomplicated and precise load placement. Infinitely variable ball-type lowering valve provides a full range of lowering speeds for optimum control.

Premium design lift cylinder provides smooth lifting and lowering and long life with minimal maintenance.

Full system filtration prevents contaminants from entering the hydraulic system. Pressure compensating flow control valve at base of lift cylinder regulates lowering speeds.

### ELECTRICAL

All cables and wires are color coded and or numbered for easy service and tracing. Control circuits are fuse-protected, and use plug-in type connector.

Curtis® travel controller provides infinitely variable travel speeds with efficient use of battery power.

Hydraulic lift pump motor is specially designed for peak electrical efficiency at specific torque and rpm levels.

### DRIVE SYSTEM and BRAKES

Compact, open frame 24V DC drive motor provides ample torque and RPM at low current and temperature levels.

Direct drive full oil bath transmission, operates through a 25:1 transmission ratio to multiple the braking force for safe stopping performance.

The drive motor, transmission, brake and drive wheel are coupled to the control arm via pivot tube that provides the operator direct control of all drive functions.

The entire drive system is mounted within the truck frame for maximum protection.

### ACCESSIBILITY

Removal of one piece power head cover exposes major components for inspection and maintenance.

### OPTIONAL EQUIPMENT

- Curtis® transistor travel control
- Power Steering
- Hour meter
- Battery discharge indicator (BDI)
- Key switch
- Lift lock out
- Remote lift/lower buttons in handle
- 36", 42" or 48" wide fork carriage
- Cold conditioning
- Maintenance free batteries
- Remote lift/lower box

### OPTIONAL ATTACHMENTS

- Side shifting fork carriage
- 4-way auxiliary hydraulics

Optional industrial battery with built-in charger



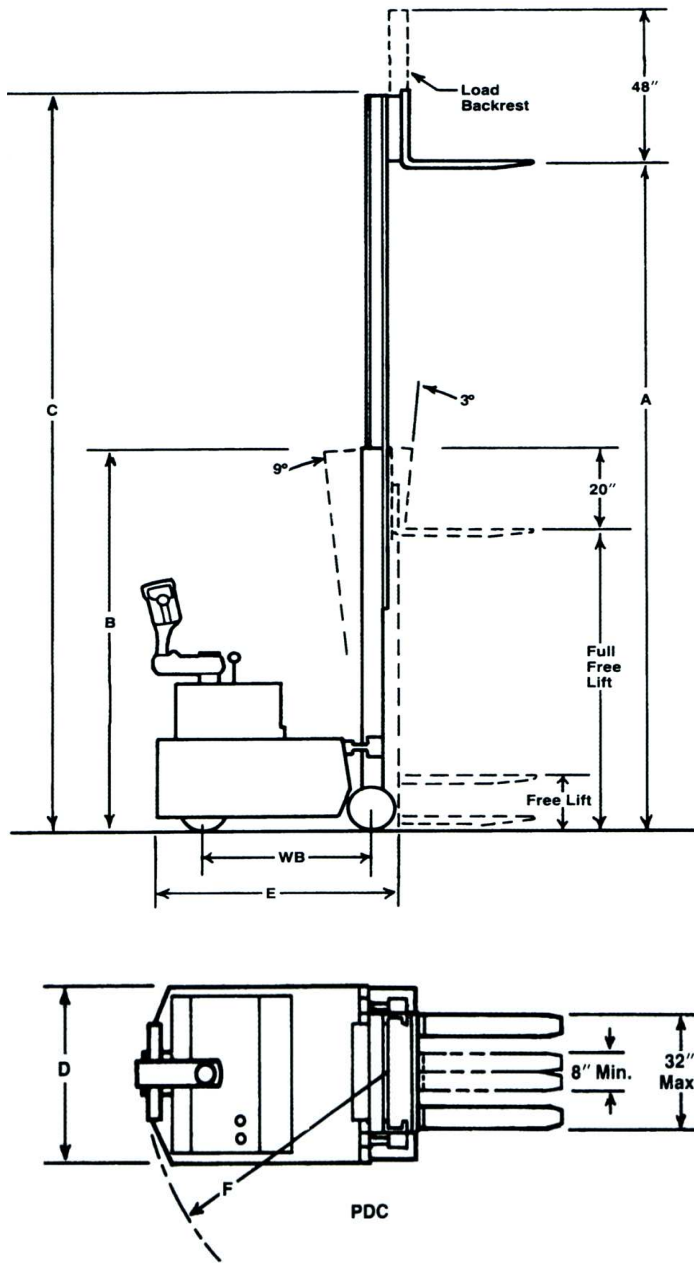


Model #	Capacity at 24" Load Center	Lift Height	Col Height	<sup>2</sup> Ext Height	Free Lift Height	Overall Width	Power Head Length	<sup>3</sup> Turn Radius	CL LOAD WHEEL TO CL DRIVE WHEEL	Battery 24V	Charger 24V	Ship Weight
		A	B	C		D	E	F	WB			
<b>PDC 15 Series</b>												
PDC-15-60	1500	60	77	80	57	36	55.1	74.7	37.1	200 AH (588 lbs.)	40 Amp (60 lbs)	2895
PDC-15-106	1500	106	71	12	12	36	55.1	74.7	37.1			3130
PDC-15-130	1500 <sup>1</sup>	130	83	147	12	36	55.1	74.7	37.1			3200
PDC-30-154	1500 <sup>1</sup>	154	95	171	12	36	55.1	74.7	37.1			3270
<b>PDC 20A Series</b>												
PDC-20A-60	2000	60	77	80	57	36	55.1	74.7	37.1	200 AH (588 lbs.)	40 Amp (60 lbs)	3740
PDC-20A-106	2000	106	71	12	12	36	55.1	74.7	37.1			3750
PDC-20A-130	2000	130	83	147	12	36	55.1	74.7	37.1			3795
PDC-20A-154	2000	154	95	171	12	36	55.1	74.7	37.1			3800
PDC-20A-168	2000	168	102	185	12	36	55.1	74.7	37.1			3850
<b>PDC 20 Series</b>												
PDC-20-60	2000	60	77	80	57	36	61.4	53.8	43.3	200 AH (588 lbs.)	40 Amp (60 lbs)	3740
PDC-20-106	2000	106	71	12	12	36	61.4	53.8	43.3			3750
PDC-20-130	2000	130	83	147	12	36	61.4	53.8	43.3			3800
PDC-20-154	2000	154	95	171	12	36	61.4	53.8	43.3			3900
PDC-20-168	2000	168	102	185	12	36	61.4	53.8	43.3			3975
<b>PDC 20 Series Tri-Mast</b>												
PDC-20-158	2000	158	71	178	51	36	61.5	53.8	43.3	200 AH (588 lbs.)	40 Amp (60 lbs)	4025
PDC-20-194	2000 <sup>1</sup>	194	83	214	63	36	61.5	53.8	43.3			4280
<b>PDC 25 Series</b>												
PDC-25-60	2500	60	77	80	57	36	61.4	53.8	43.3	340 AH (721 lbs.)	40 Amp (60 lbs)	3870
PDC-25-106	2500	106	71	12	12	36	61.4	53.8	43.3			4315
PDC-25-130	2500	130	83	147	12	36	61.4	53.8	43.3			4420
PDC-25-154	2500	154	95	171	12	36	61.4	53.8	43.3			4600
PDC-25-168	2500	168	102	185	12	36	61.4	53.8	43.3			4675
<b>PDC 25 Series Tri-Mast</b>												
PDC-25-158	2500	158	71	178	51	36	61.5	53.8	43.3	340 AH (721 lbs.)	40 Amp (60 lbs)	4760
PDC-25-194	2500 <sup>1</sup>	194	83	214	63	36	61.5	53.8	43.3			4890
<b>PDC 30 Series</b>												
PDC-30-60	3000	60	77	80	57	36	67.4	59.8	49.3	340 AH (721 lbs.)	40 Amp (60 lbs)	7025
PDC-30-106	3000	106	71	12	12	36	67.4	59.8	49.3			4370
PDC-30-130	3000	130	83	147	12	36	67.4	59.8	49.3			4675
PDC-30-154	3000	154	95	171	12	36	67.4	59.8	49.3			4703
PDC-30-168	3000	168	102	185	12	36	67.4	59.8	49.3			4780
<b>PDC 30 Series Tri-Mast</b>												
PDC-30-158	3000	158	71	178	51	36	67.5	59.8	49.3	340 AH (721 lbs.)	75 Amp (90 lbs)	4780
PDC-30-194	3000 <sup>1</sup>	194	83	214	63	36	67.5	59.8	49.3			4910

<sup>1</sup> For derate consult factory

<sup>2</sup> Add 31" for 48" tall load backrest

<sup>3</sup> Length to face of forks

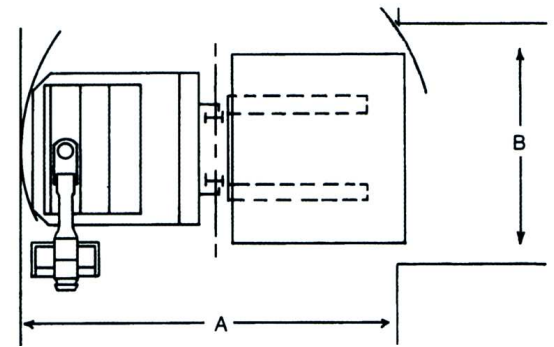


### Right Angle Stacking Requirements

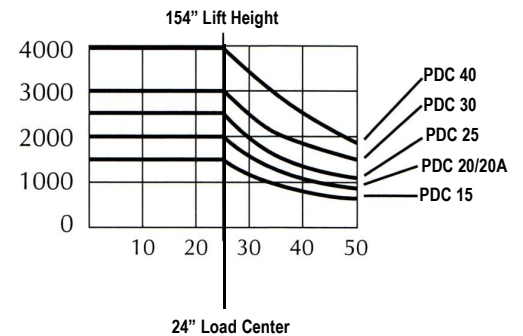
A = Aisle B = Bay

Model Number	Truck Length	Load Size					
		36" x 36"		42" x 42"		48" x 48"	
		B	A	B	A	B	A
PDC-15	55"	42"	92"	48"	98"	54"	104"
PDC-20A							
PDC-20	61"	42"	98"	48"	104"	54"	110"
PDC-25							
PDC-30	67"	42"	104"	48"	110"	54"	116"
PDC-40	73"	42"	110"	48"	116"	54"	122"

- Aisle dimensions listed have zero clearance
- Add 12" for ease of use



### Load Capacity Chart



Model #	Capacity at 24" Load Center	Lift Height	Col Height	<sup>2</sup> Ext Height	Free Lift Height	Overall Width	Power Head Length	Turn Radius	CL LOAD WHEEL TO CL DRIVE WHEEL WB	Battery 24V	Charger 24V	Ship Weight
		A	B	C								
<b>PDC 40 Series</b>												
PDC-40-60	4000	60	77.5	80	57	36	73.3	65.7	55.3	510 AH (1042 lbs.)	75 Amp (90 lbs)	5238
PDC-40-106	4000	106	71.5	12	12	36	73.3	65.7	55.3			5688
PDC-40-130	4000	130	83.5	147	12	36	73.3	65.7	55.3			5808
PDC-40-154	4000	154	95.5	171	12	36	73.3	65.7	55.3			5928
PDC-40-168	4000	168	102.5	185	12	36	73.3	65.7	55.3			6048
<b>PDC 40 Series Tri-Mast</b>												
PDC-40-158	4000	158	71.5	178	51	36	73.5	65.7	55.3	510 AH (1042 lbs.)	75 Amp (90 lbs)	5980
PDC-40-194 <sup>1</sup>	4000	194	83.5	214	63	36	73.5	65.7	55.3			6100

<sup>1</sup> For derate consult factory

<sup>2</sup> Add 31" for load backrest