

Print Number:

Print Date:

# NOBLELIFT

Material Handling



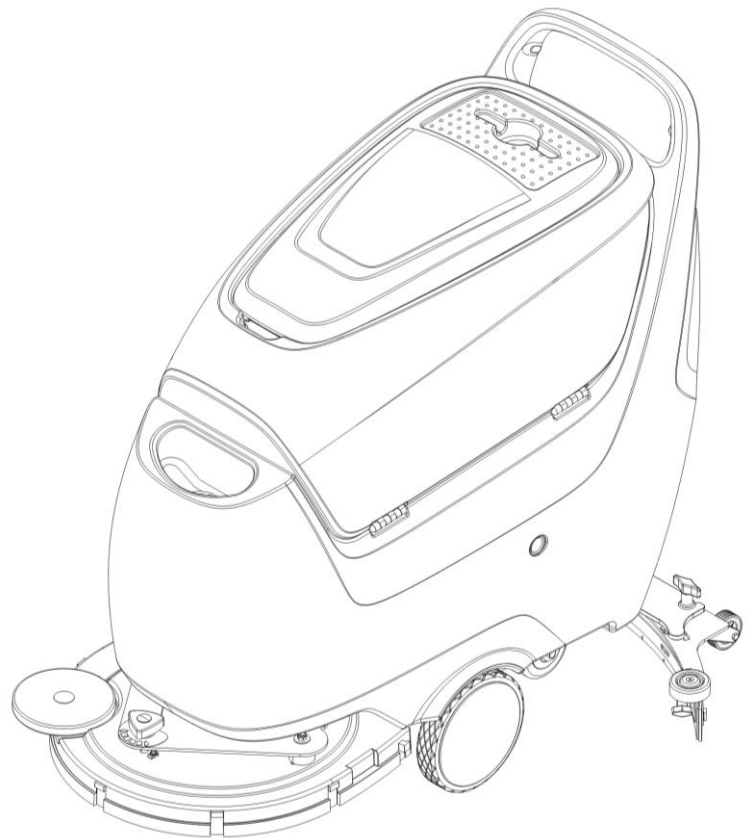
Scan QR Code for More

**Walk-behind scrubber**

**NB530**

**Parts Manual**

**590146020101**



**Version V03**

Scrubber Identification Number From:

Parts Manual NB530-PM03EN

---

Please order parts from authorized dealers of Noblelift Intelligent Equipment Co., LTD.

In order to avoid wrong delivery, all the orders for spare parts should specify the following items:

- Truck model, identification number and manufacture year.
- Orders for spare parts of mast, hydraulic transmission unit, steering axle, motor, etc. shall indicate the manufacture number of these parts.
- Codes for Noblelift spare parts are shown in the table of parts manual. Please also pay attention to the description of supply status, order quantity, etc. (check the number listed in "Mark" column of the parts manual).

"Mark" Column:

The unmarked indicates the parts are in short supply cycle.

Number 1: supply as package. Indicating these that parts are small parts and seal parts, which are supplied in package unit and in short supply cycle.

Number 2: supply with constraints. Indicating that these spare parts are not in stock and will be prepared for production after receiving the order from customers, which are in long supply cycle.

Number 3: phasing-out supply. Indicating that these parts will be replaced by new parts due to technical improvements and the current stock will not be available when these parts run out. Please check the description of technical improvements notice.

Number 4: supply as assembly. Indicating that these parts are assembly parts defined by manufacture process, which cannot be supplied as a single part.

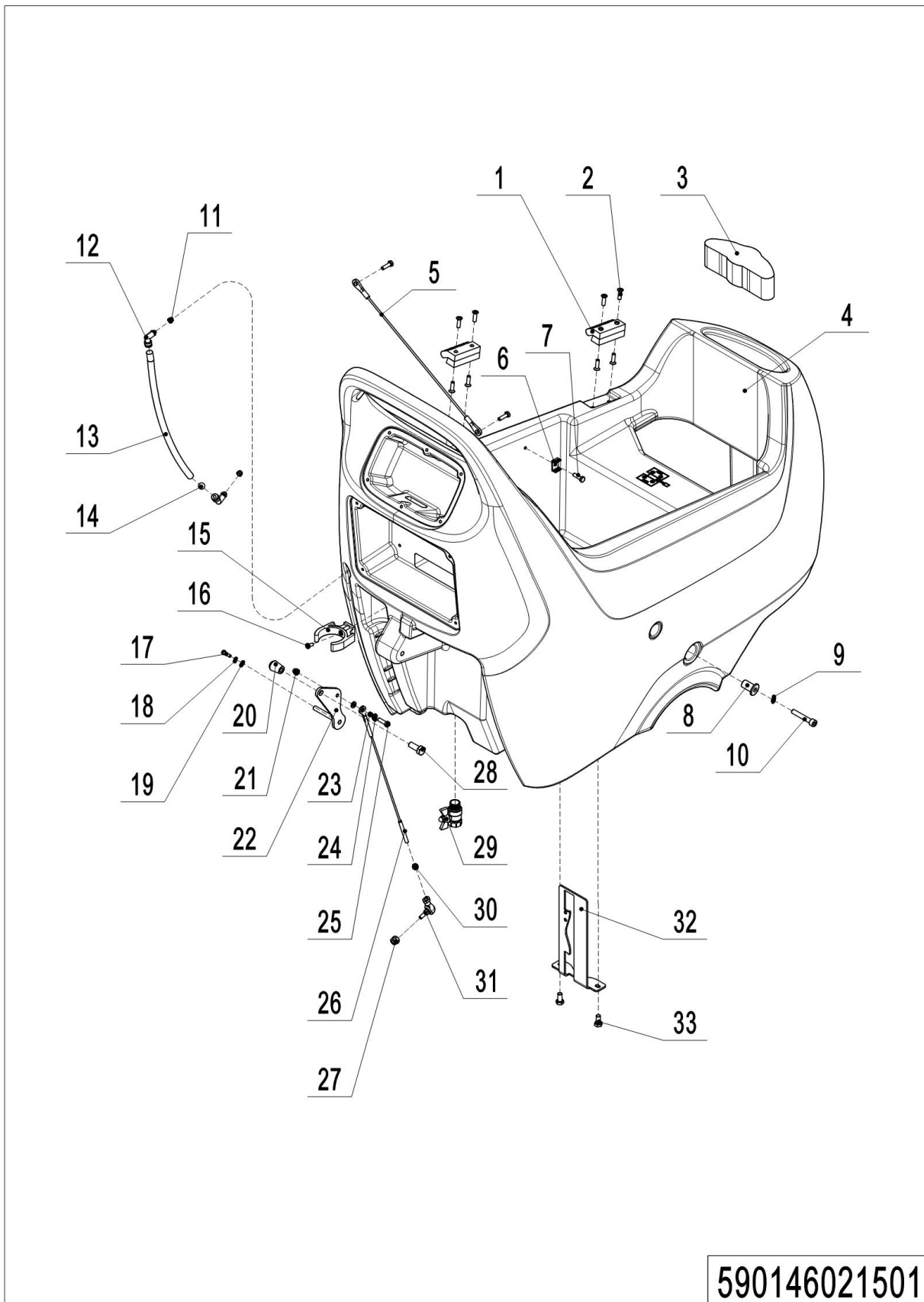
Number 5: check other tables.

This parts manual is the property of Noblelift and can be shared under the confidential agreement only, Noblelift has the right to claim for compensation of any unauthorized use. Copy without permission is not allowed. Figures in the manual are not limited by the original design. Noblelift Intelligent Equipment Co., LTD reserves the right to improve the products for continuous technology progress.

---

# Table of Contents

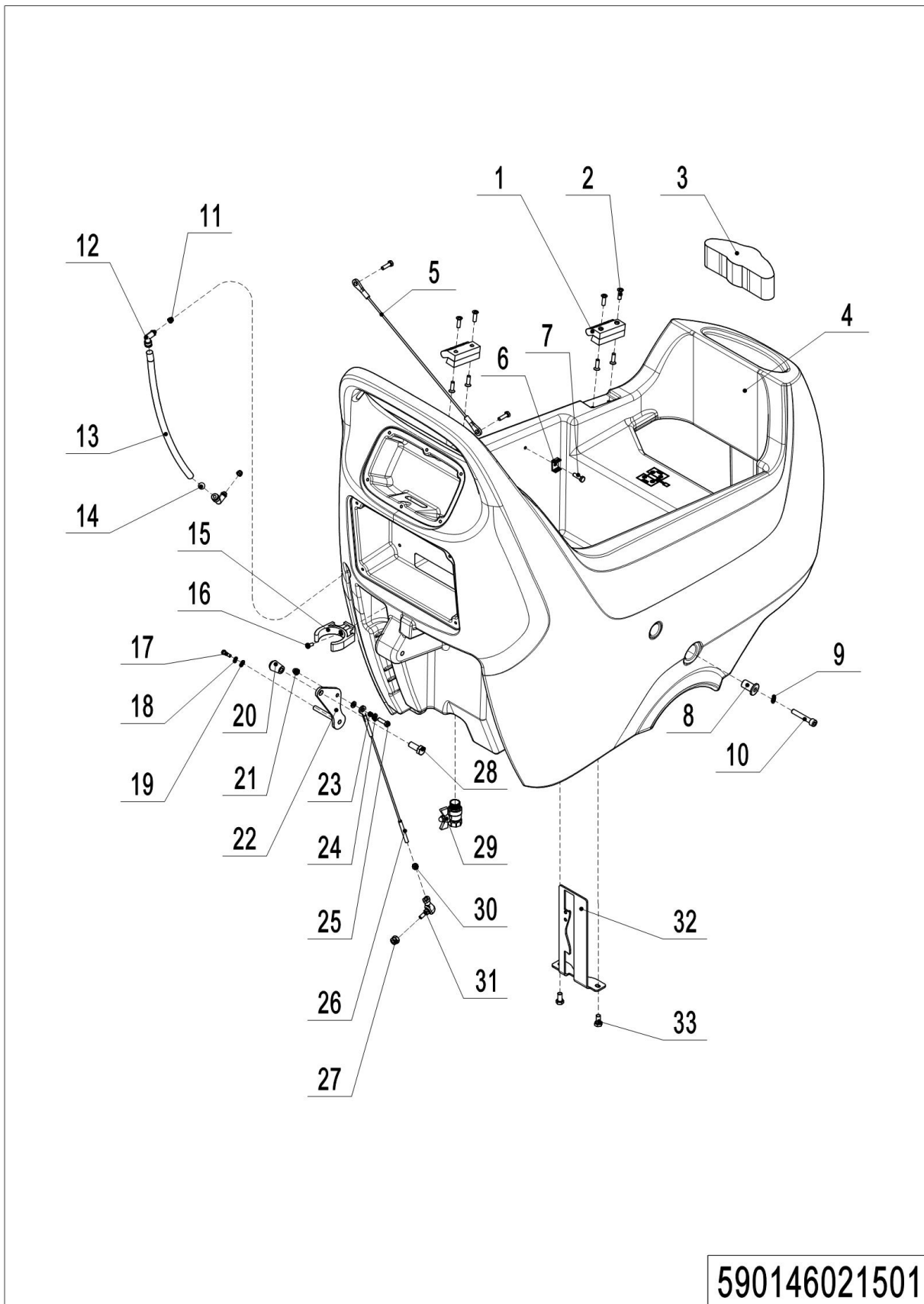
Chapter 1: Truck Frame.....	1
01 Solution tank (590146021501).....	1
02 Recovery tank (590146021502) .....	5
03 Brush system (590146021503).....	7
04 Chassis (590146021504) .....	11
05 Squeegee system (590146021505) .....	13
06 Solution assembly (590146021506).....	17
07 Wheels (590146017001) .....	19
Chapter 2: Electrical parts.....	21
01 Operating panel (590146010001) .....	21
02 Electronic control components (590146033001).....	23
03 Traction Battery (590146037001) .....	25
04 Charger (590146036501) .....	27
Chapter 3: Others.....	29
01 Labels and decals (590146047001) .....	29
Appendix .....	31
01 Electrical Circuit Diagram ( 590146045501).....	31
02 Easy Wornout Parts List.....	32
03 Consumables list .....	33

**Chapter 1 : Truck Frame****01 Solution tank (590146021501)****590146021501**

## 01 Solution tank (590146021501)

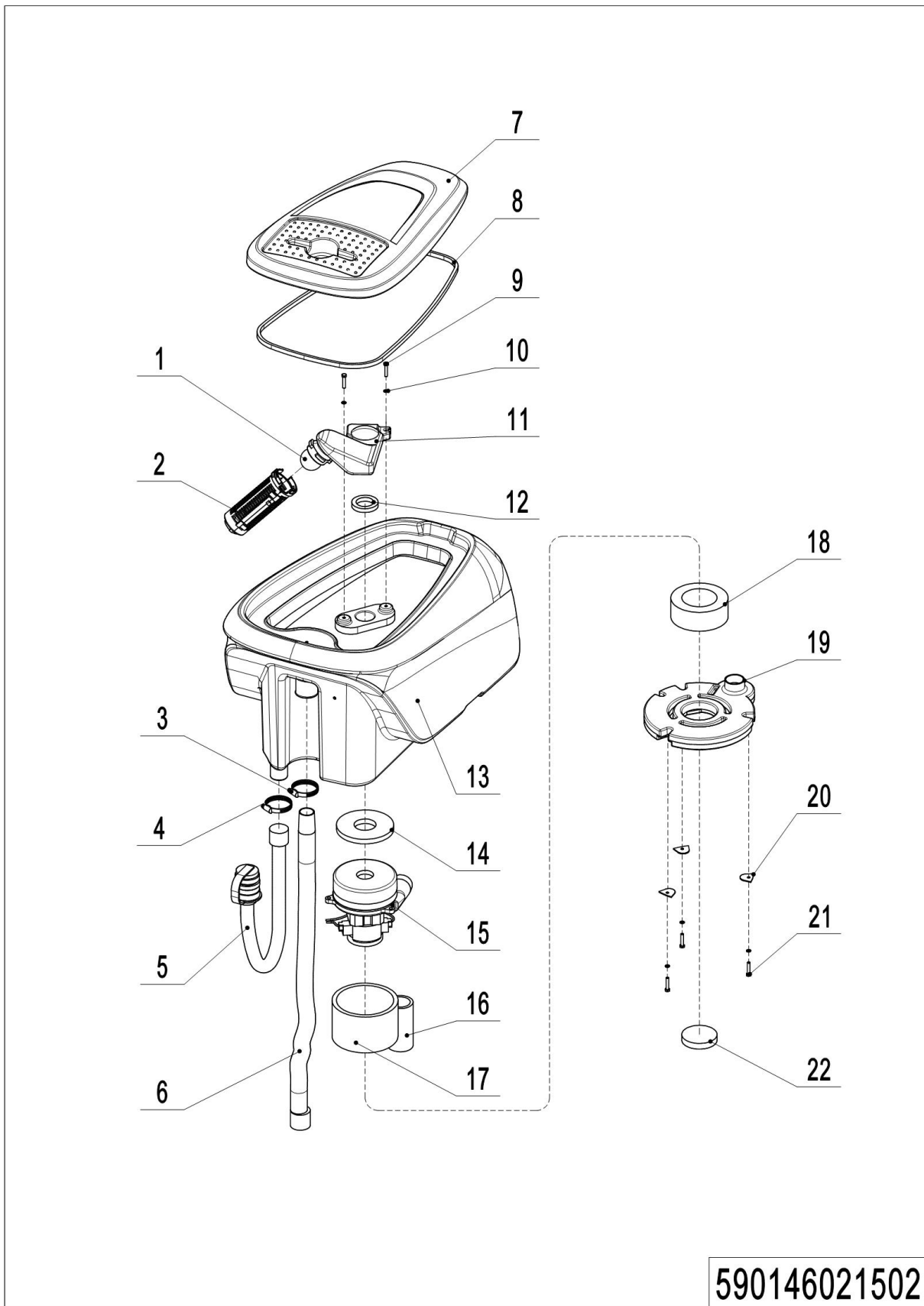
No.	Item Code	Mark	Item Description	Qty.	Substitute	Note
1	59019852012		HINGE	2		
2	59019852014		SCREW SOCKET HD M6×20	8		
3	59019852006		SPONGE	1		
4	59019852002		SOLUTION TANK	1		
5	59019852004		CABLE	1		
6	59019852009		FLAT TIE HOLDER	5		
7	59019852009		SCREW CYL HD M5×12	5		
8	59019852004		BUSHING FOR PEDAL	1		
9	59019852007		WAHSER SPLIT M8 SS	1		
10	59019852008		SCREW SOCKET HD M8×60	1		
11	59019852013		RUBBER PLUG	2		
12	59019852012		L CONNECTOR 8	2		
13	59019852013		HOSE 8	0.4		0.4m
14	59019852013		BALL Ø6.5	1		
15	59019852001		DRAIN HOSE CLAMP	1		
16	59019852009		SCREW CYL HD M5×12	3		
17	59019852009		SCREW PAN HD M5×16	1		
18	59019852007		WASHER SPLIT M5	1		
19	59019852007		WASHER FLAT D5×D16×1.0	1		
20	590198520011		KNOB	1		
21	59019852007		BLIND NUT M6 SS	1		
22	59019852003		SQUEEGEE LIFTING LEVER	1		
23	59019852003		SPACER D6.5×D10×5	1		
24	59019852007		WASHER FLAT D6×D18	2		
25	59019852008		SCREW HEX HD M6×20	1		
26	59019852003		SQUEEGEE LIFTING CABLE	1		
27	59019852006		NUT HEX SELF LOCKING M6	1		
28	59019852012		SCREW HEX HD M10×25	1		
29	59019852015		VALVE 15.7mm	1		
30	59019852007		NUT M6 SS	1		

## 01 Solution tank (590146021501) (Continuation)



## 01 Solution tank (590146021501) (Continuation)

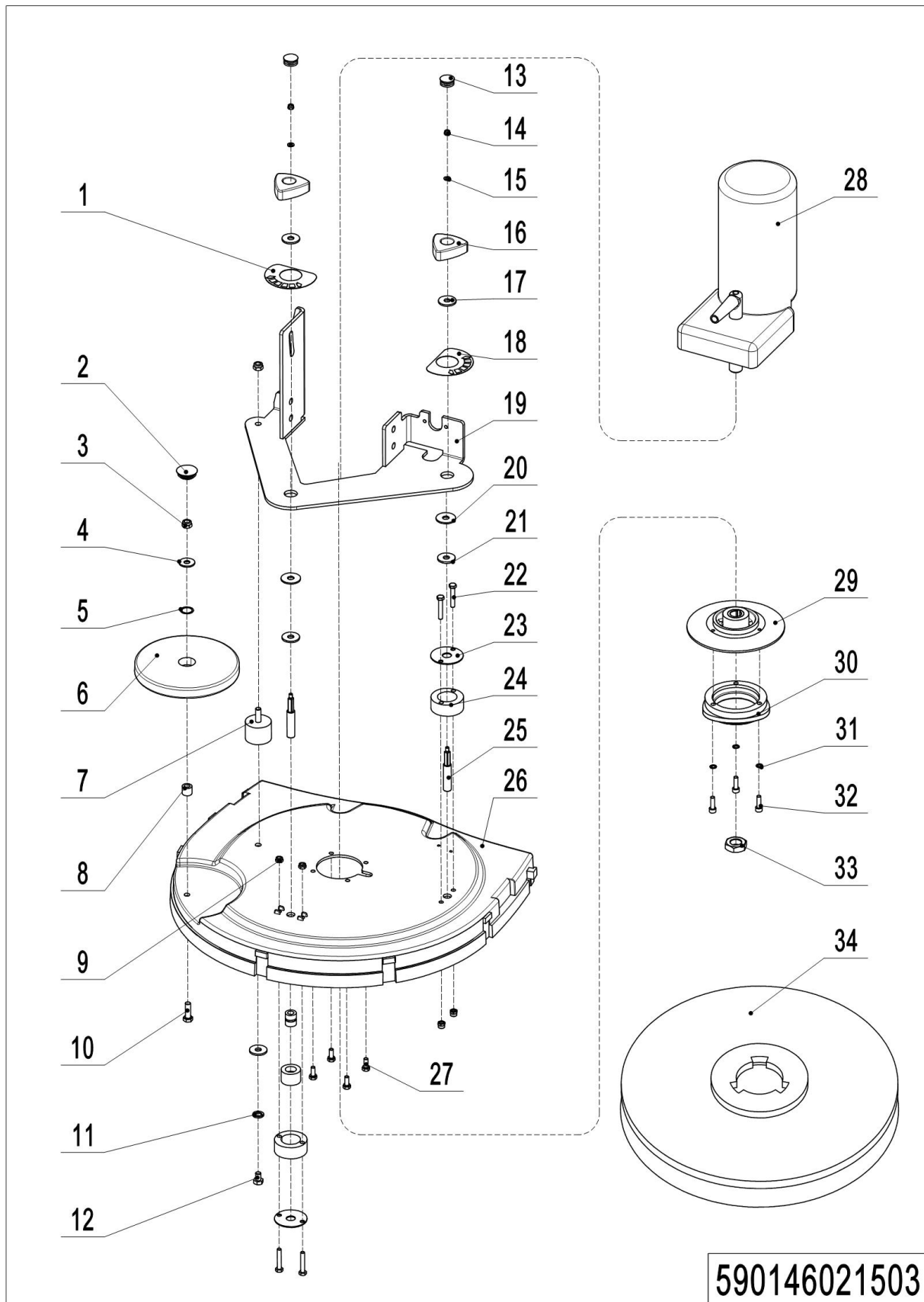
No.	Item Code	Mark	Item Description	Qty.	Substitute	Note
31	590198520116		BALL BARING M6	1		
32	59019852004		SUPPORT FOR PEDAL	1		
33	59019852014		SCREW M6×16 W WASHER	2		

**02 Recovery tank (590146021502)**



## 02 Recovery tank (590146021502)

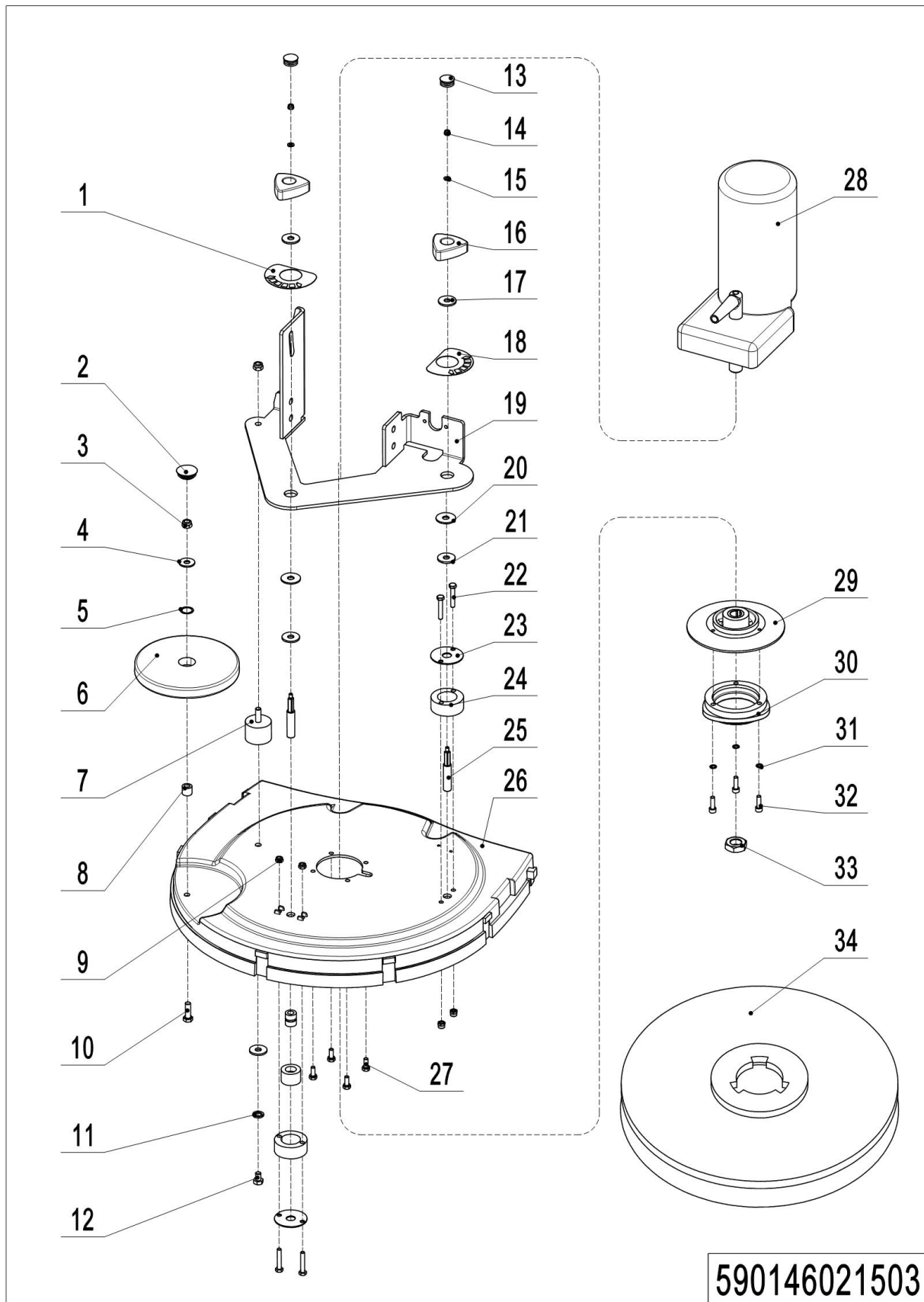
No.	Item Code	Mark	Item Description	Qty.	Substitute	Note
1	59019852001		FLOATING BALL	1		
2	59019852001		CAGE FOR FLOATING BALL	2		
3	59019852009		HOSE CLAMP D33-57	1		
4	59019852010		HOSE CLAMP D27-51	1		
5	59019852006		DRAIN HOSE	1		
6	59019852006		VACUUM HOSE	1		
7	59019852002		RECOVERY TANK COVER	2		
8	59019852006		GASKET	1.72		1.72m
9	59019852014		SCREW SOCKET HD M6×25	2		
10	59019852007		WASHER FLAT D6×D18	5		
11	59019852001		SUPPORT FOR CAGE	1		
12	59019852005		GASKET	1		
13	59019852002		RECOVERY TANK	1		
14	59019852005		GASKET	1		
15	59039851000		VACUUM MOTOR 24V	1		
16	59019852005		ACOUSTIC INSULATION PIPE	1		
17	59019852005		ACOUSTIC INSULATION PIPE	1		
18	59019852005		GASKET	1		
19	59019852002		VACUUM MOTOR COVER	1		
20	59019852004		PLATE FOR VACUUM COVER	3		
21	59019852008		SCREW HEX HD M6×30	3		
22	59019852005		FILTER FOAM	1		

**03 Brush system (590146021503)**

## 03 Brush system (590146021503)

No.	Item Code	Mark	Item Description	Qty.	Substitute	Note
1	59019852000		DECAL	1		
2	59019852001		CAP 25	1		
3	59019852006		NUT HEX SELF LOCKING M8	2		
4	59019852010		WASHER D8×D24×2	1		
5	59019852010		WASHER D16×D21×0.5	1		
6	59019852001		BUMPER ROLLER	1		
7	59019852003		VIBRATION DAMPING M8	1		
8	59019852010		SPACE	1		
9	59019852006		NUT HEX SELF LOCKING M6	4		
10	59019852014		SCREW HEX HD M8×30	1		
11	59019852007		WAHSER SPLIT M8 SS	1		
12	59019852008		SCREW HEX HD M8×16	1		
13	59019852000		CAP FOR KNOB	2		
14	59019852006		NUT HEX SELF LOCKING M5	2		
15	59019852007		WASHER FLAT D5×D16×1.0	2		
16	59019852000		ADJUSTING KNOB	2		
17	59019852008		WASHER FLAT D10×D30×2.5	3		
18	59019852000		DECAL	1		
19	59019852003		BRACKET OF BRUSH	1		
20	59019852005		RUBBER WASHER	2		
21	59019852007		WASHER FLAT D9×D27×3	3		
22	59039852008		SCREW HEX HD M6×35	4		
23	59019852003		VIBRATION DAMPING PLATE	2		
24	59019852003		SPACER	2		
25	59019852003		ADJUSTING SCREW STEM	2		
26	59019852000		BRUSH DECK 530	1		
27	59019852014		SCREW M6×16 W WASHER	4		
28	59019851000		REDUCTION GEARMOTOR	1		
29	59019852004		COUPLING JK	1		
30	59019852001		BRUSH HOLDER	1		

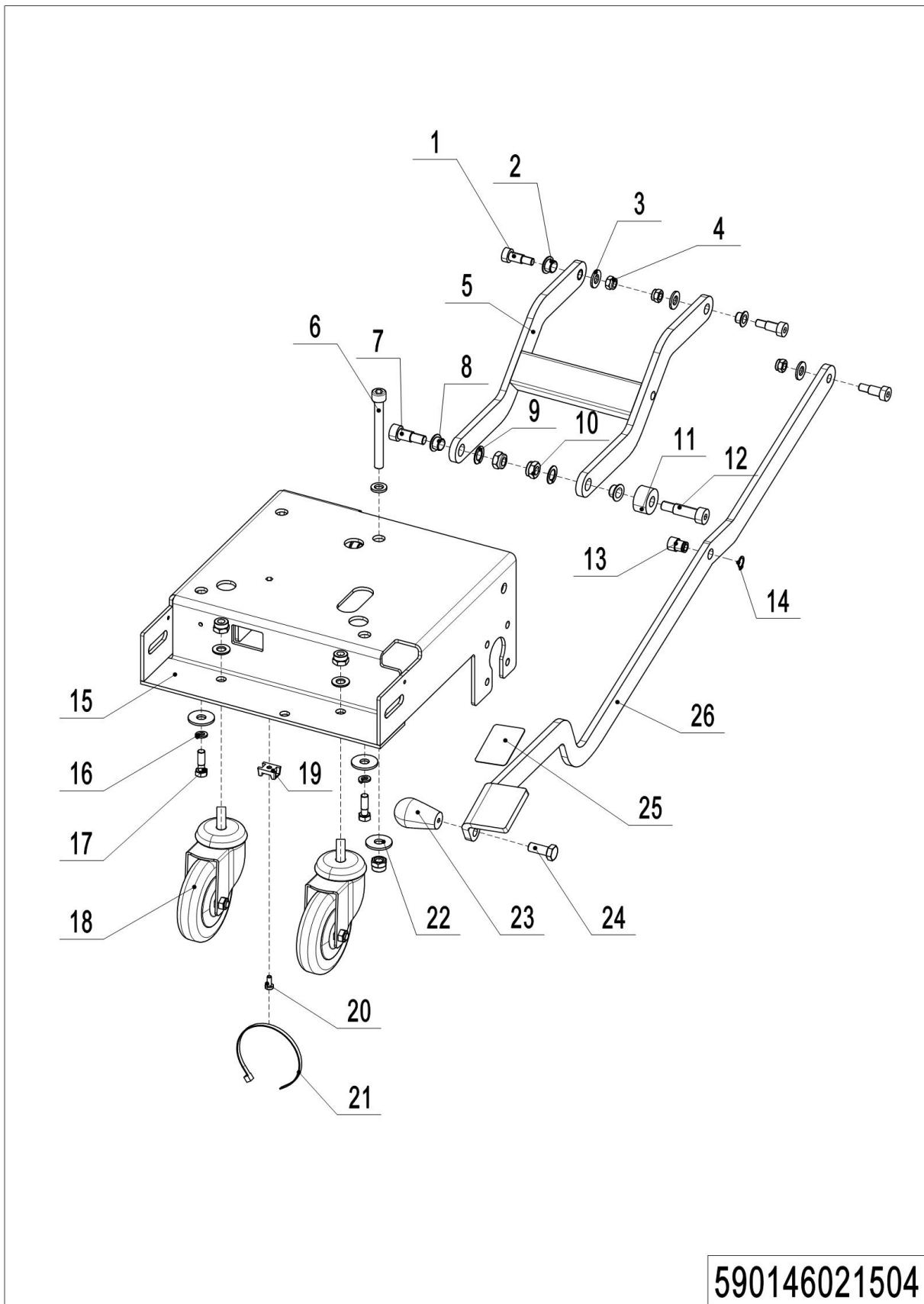
## 03 Brush system (590146021503) (Continuation)



1= Supply as package. 2= Supply with constraints. 3= Phasing-out supply. 4= Supply as assembly. 5= Check other tables.

## 03 Brush system (590146021503) (Continuation)

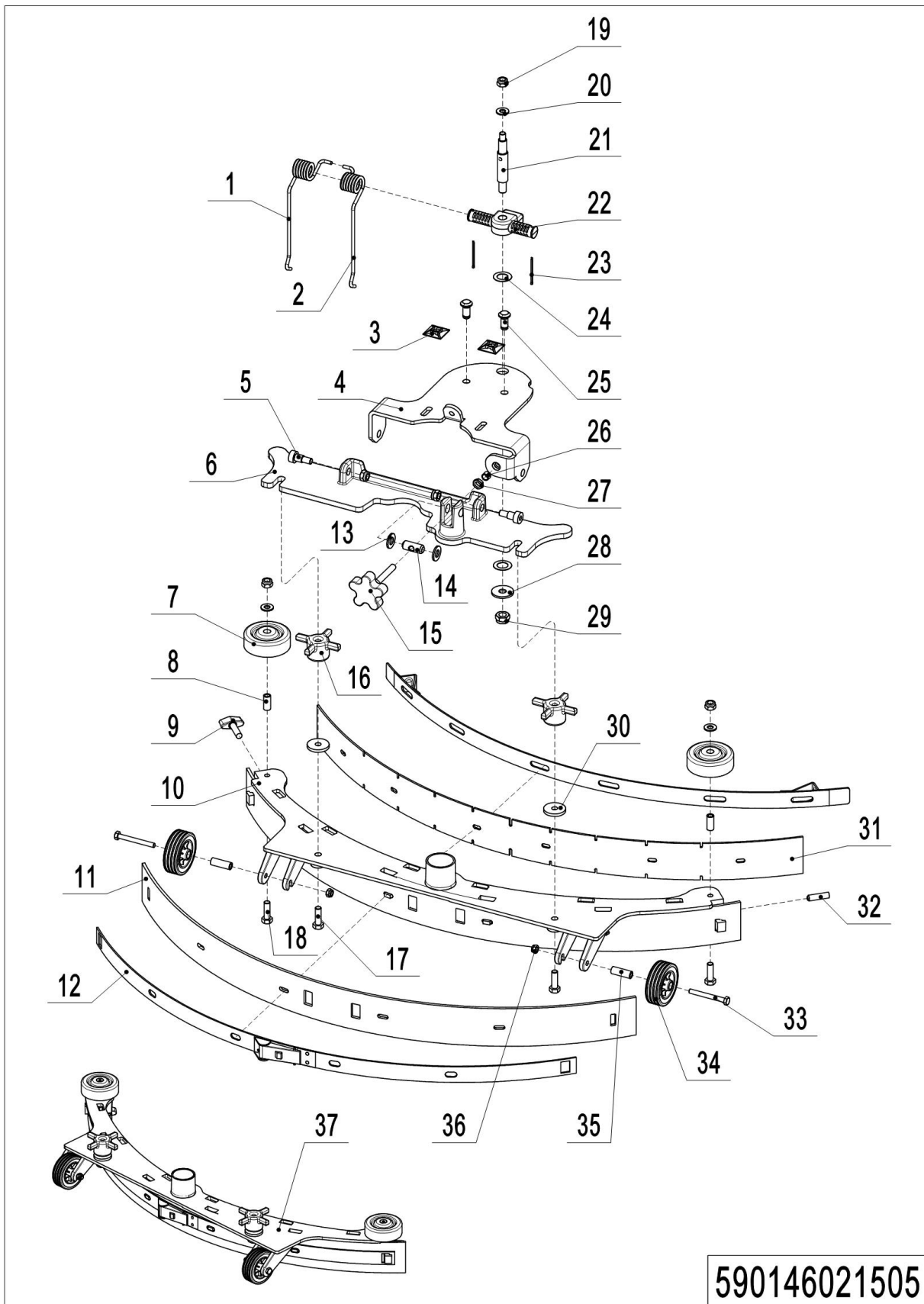
No.	Item Code	Mark	Item Description	Qty.	Substitute	Note
31	59019852007		WASHER SPLIT M6 SS	3		
32	59019852008		SCREW SOCKET HD M6×20	3		
33	59019852007		M20 NUT LEFT	1		
34	59019852016		BRUSH	1		
34	590198520171		BRUSH(SOFT)	1		OPTIONAL
34	59019852017		BRUSH(HARD)	1		OPTIONAL
34	59019852016		PAD DRIVER	1		

**04 Chassis (590146021504)**

## 04 Chassis (590146021504)

No.	Item Code	Mark	Item Description	Qty.	Substitute	Note
1	59019852009		BOLT SOCKET M10×16	3		
2	59019852002		SPACER	2		
3	59019852008		WAHSER FLAT D10×D20×2.5	7		
4	59019852006		NUT HEX SELF LOCKING M8	3		
5	59019852003		LIFT HOLDER	1		
6	59019852008		SCREW SOCKET HD M10×90	1		
7	590198520110		BOLT SOCKET M12×16	1		
8	59019852001		SPACER	2		
9	590198520111		WAHSER SPLIT M12	2		
10	59019852006		NUT HEX SELF LOCKING M10	5		
11	590198520113		SLEEVE	1		
12	590198520112		BOLT SOCKET M12×30	1		
13	590198520115		SPACER FOR PEDAL	1		
14	590198520114		CIRCLIPS	1		
15	59019852003		CHASSIS SYSTEM	1		
16	59019852007		WASHER SPLIT M10 SS	2		
17	59019852008		SCREW HEX HD M10×20	2		
18	59019852000		WHEEL REVOLVING SS	2		
19	59019852009		FLAT TIE HOLDER	1		
20	59019852009		SCREW CYL HD M5×12	1		
21	59019852000		CABEL 4.8 X 250MM	1		
22	59019852008		WASHER FLAT D10×D30×2.5	3		
23	590198520011		KNOB	1		
24	59019852012		SCREW HEX HD M10×25	1		
25	59019852000		SAFETY-WALK STICKERS	1		
26	59019852004		PEDAL	1		

## 05 Squeegee system (590146021505)

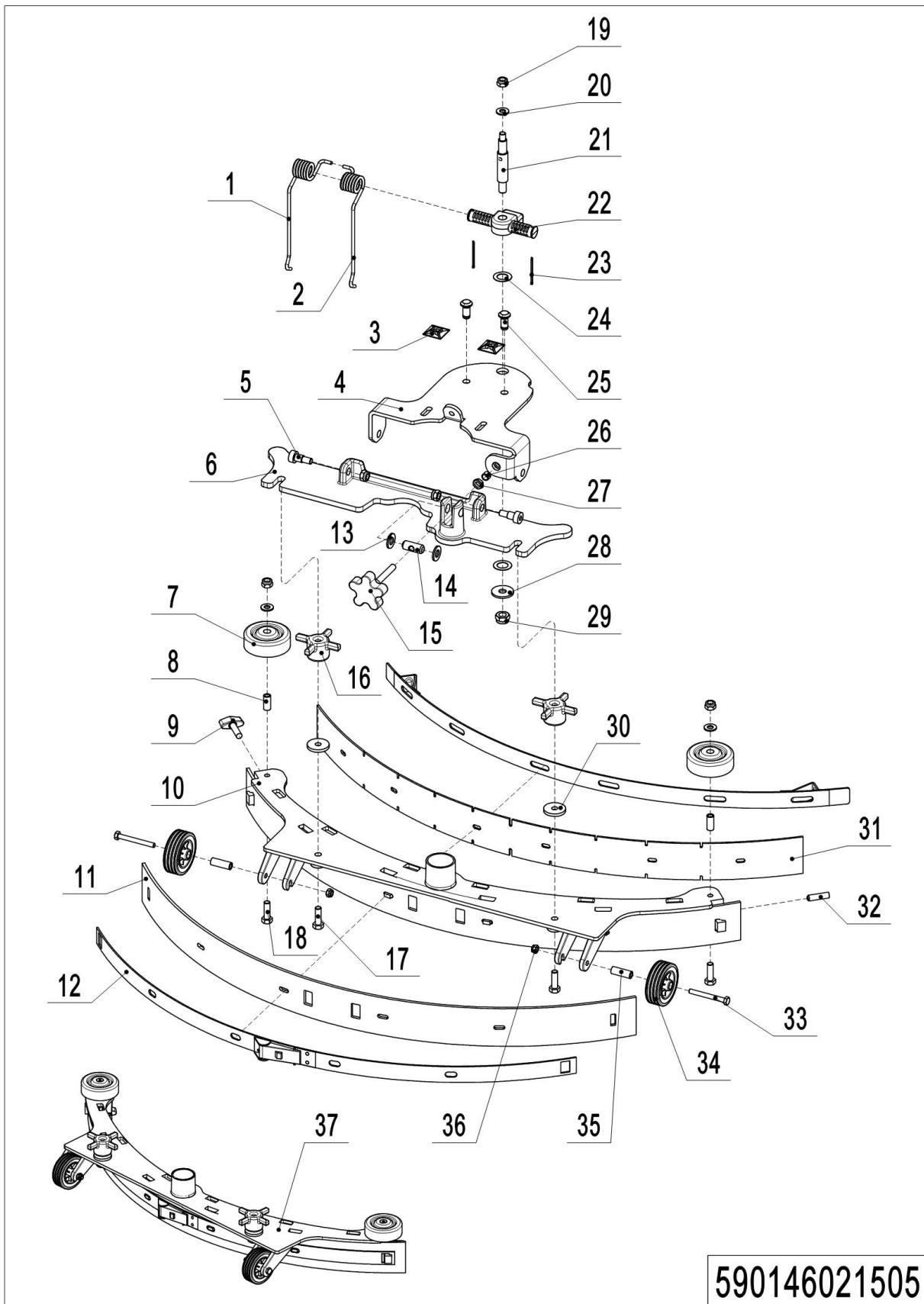




## 05 Squeegee system (590146021505)

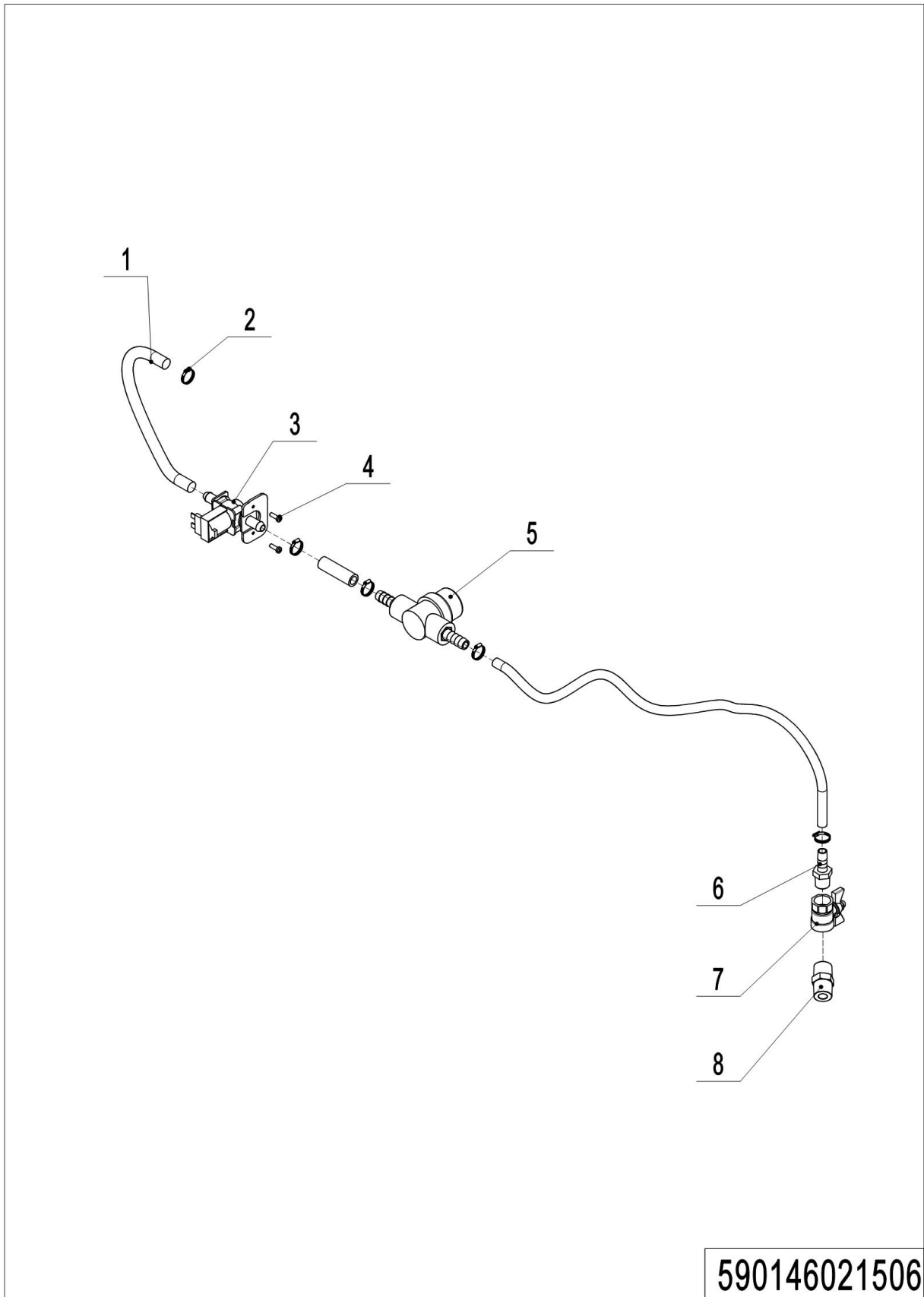
No.	Item Code	Mark	Item Description	Qty.	Substitute	Note
1	59019852005		SPRING LEFT	1		
2	59019852005		SPRING RIGHT	1		
3	59019852012		HOLDER	2		
4	59019852004		HOLDER FOR SQUEEGEE	1		
5	59019852009		BOLT SOCKET M10×16	2		
6	59019852000		SUPPORT FOR SQUEEGEE	1		
7	590198520131		WHEEL	2		
8	59019852014		SPACER	2		
9	59019852014		SCREW 32	1		
10	59019852012		SQUEEGEE BLADE	1		
11	59019852013		BLADE REAR RUBBER	1		
11	59019852016		BLADE REAR NR	1		OPTIONAL
11	59019852016		BLADE REAR PU	1		OPTIONAL
12	59019852013		HOLDER FOR BLADE	1		
13	59019852002		WASHER D12×24×2	2		
14	59019852012		SHAFT	1		
15	59019852012		KNOB	1		
16	59019852013		HANDLE	2		
17	59019852015		SCREW HEX HD M8×35	2		
18	59019852010		SCREW HEX HD M8×25	2		
19	59019852006		NUT HEX SELF LOCKING M8	5		
20	590198520117		WASHER FLAT D8×D16×1	3		
21	590198520118		SHAFT	1		
22	59019852002		SUPPORT FOR SPRING	1		
23	590198520119		PIN 2×32	2		
24	59019852002		WASHER D16×30×3	2		
25	59019852012		SHAFT	2		
26	590198520121		SPACER	1		
27	59019852012		NUT M8	2		
28	59019852008		WASHER FLAT D10×D30×2.5	1		

## 05 Squeegee system (590146021505) (Continuation)



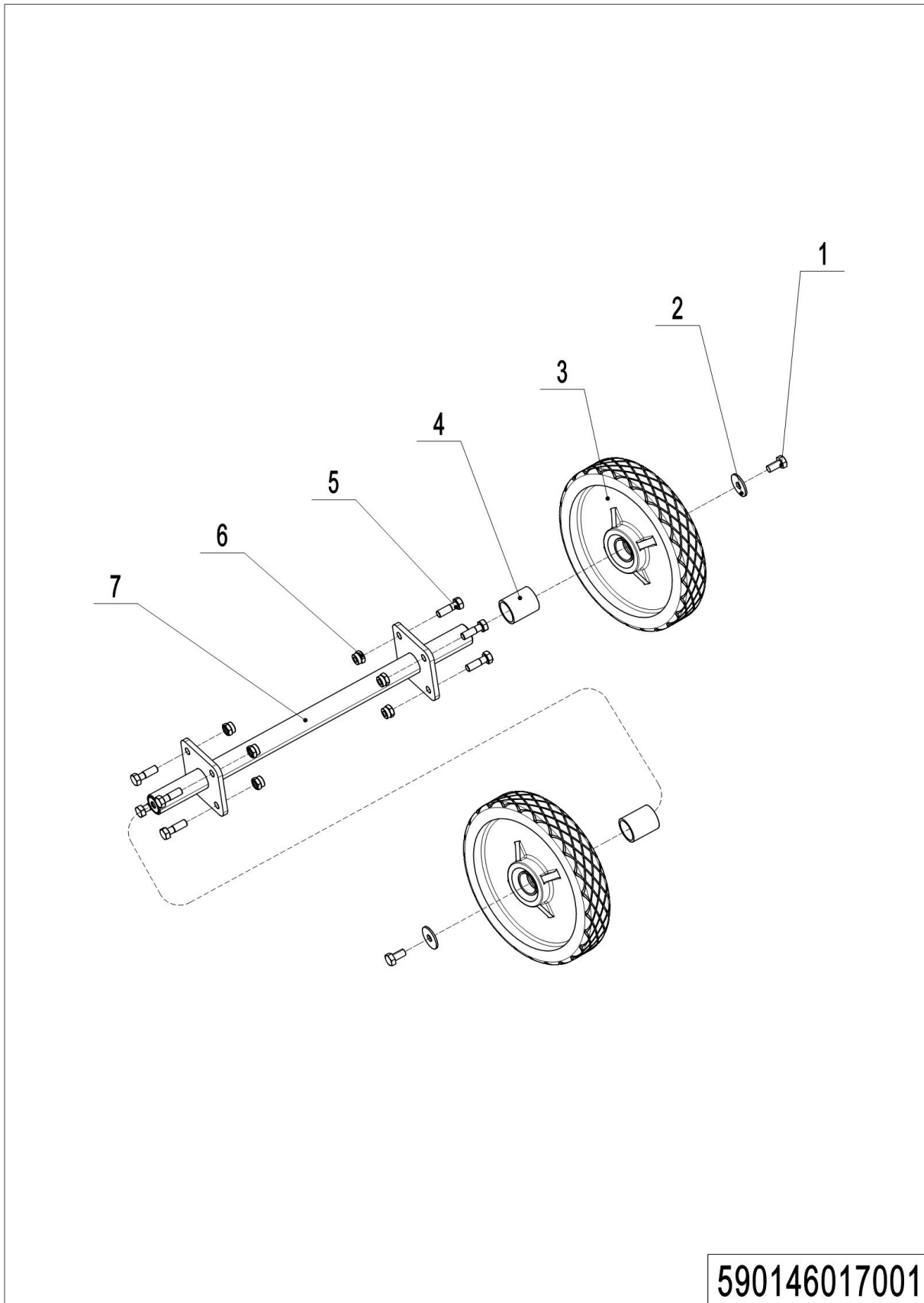
## 05 Squeegee system (590146021505) (Continuation)

No.	Item Code	Mark	Item Description	Qty.	Substitute	Note
29	59019852006		NUT HEX SELF LOCKING M10	1		
30	59019852005		RUBBER WASHER	2		
31	59019852013		BLADE FRONT RUBBER	1		
31	590198520161		BLADE FRONT NR	1		OPTIONAL
31	59019852016		BLADE FRONT PU	1		OPTIONAL
32	59019852014		SCREW M8×30	1		
33	590198520151		SCREW HEX HD M6×55	2		
34	59019852013		REAR WHEEL	2		
35	59019852015		SPACE	2		
36	59019852006		NUT HEX SELF LOCKING M6	2		
37	59019851000		SQUEEGEE ASSEMBLY	1		

**06 Solution assembly (590146021506)**

## 06 Solution assembly (590146021506)

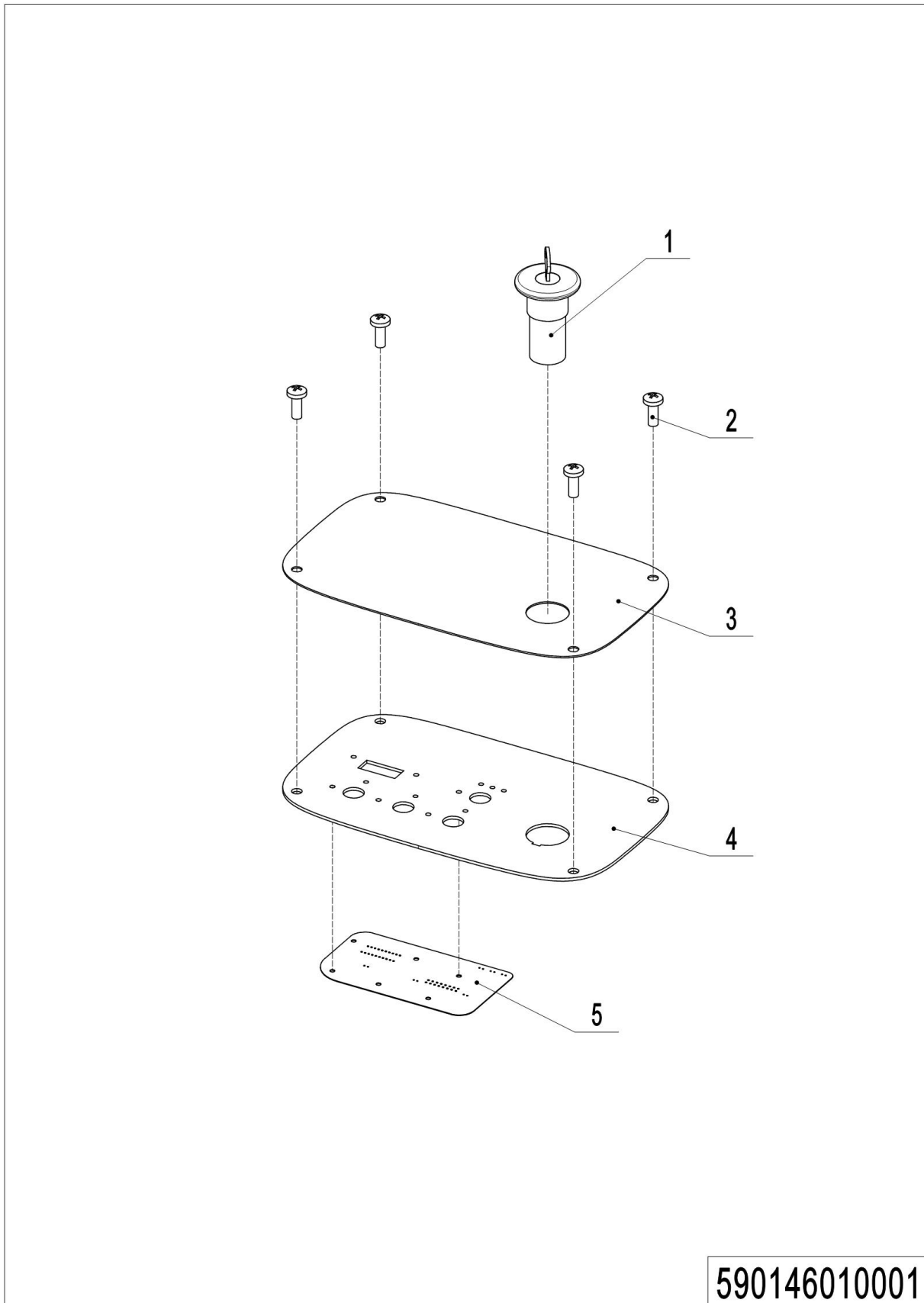
No.	Item Code	Mark	Item Description	Qty.	Substitute	Note
1	59019852006		HOSE PVC	0.25		0.25m
2	59019852009		HOSE CLAMP D13-19	6		
3	59019852014		SOLENOID VALVE 24V	1		
4	59019852009		SCREW CYL HD M4×12	2		
5	59019852013		FILTER	1		
6	59019852000		CONNECTOR 2-12	1		
7	59019852014		SOLUTION TAP	1		
8	59039852006		CONNECTOR 2-2	1		

**07 Wheels (590146017001)****590146017001**

1= Supply as package. 2= Supply with constraints. 3= Phasing-out supply. 4= Supply as assembly. 5= Check other tables.

## 07 Wheels (590146017001)

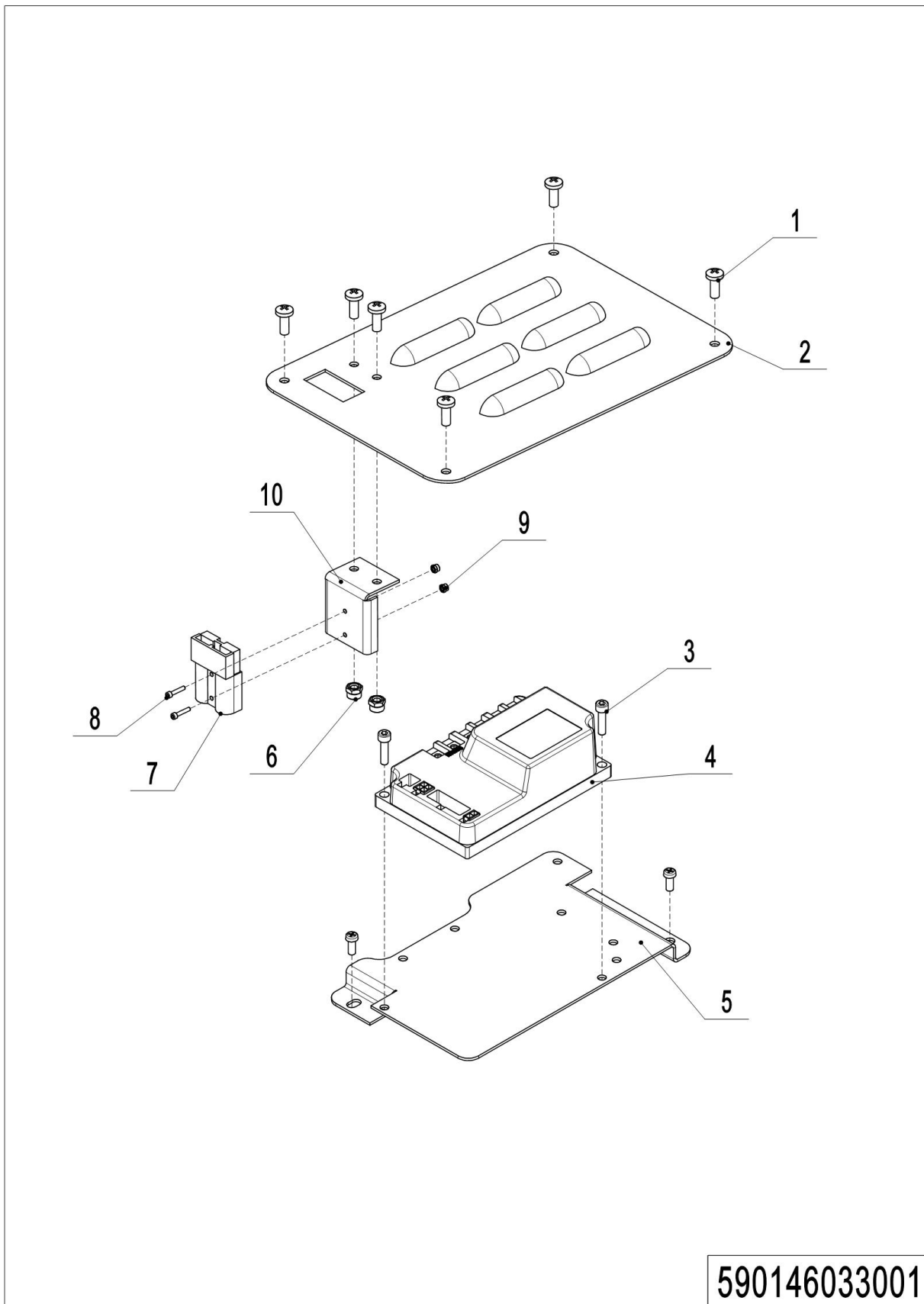
No.	Item Code	Mark	Item Description	Qty.	Substitute	Note
1	59019852010		SCREW SOCKET HD M8×16	2		
2	59019852010		WASHER	2		
3	59019852002		WHELL WITHOUT HUB 8"	2		
4	59019852001		SPACER	2		
5	59019852009		SCREW HEX HD M8×20	8		
6	59019852006		NUT HEX SELF LOCKING M8	8		
7	59019852002		WHEEL SHAFT NB530	1		

**Chapter 2 : Electrical parts****01 Operating panel (590146010001)**



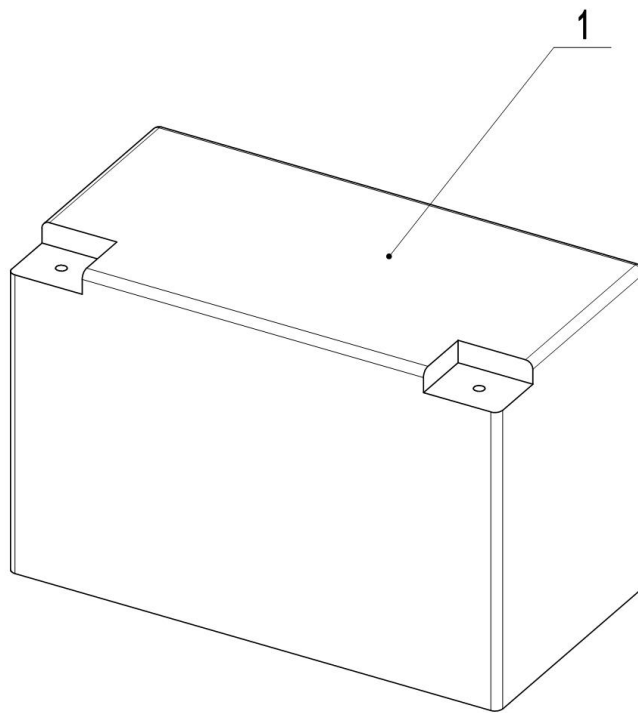
## 01 Operating panel (590146010001)

No.	Item Code	Mark	Item Description	Qty.	Substitute	Note
1	59019852015		START SWITCH WITH KEY	1		
2	59019852009		SCREW CYL HD M5×12	4		
3	59019852015		DECAL	1		
4	59019852015		HOLDER	1		
5	59019852015		ELECTRONIC CARD NL	1		

**02 Electronic control components (590146033001)**

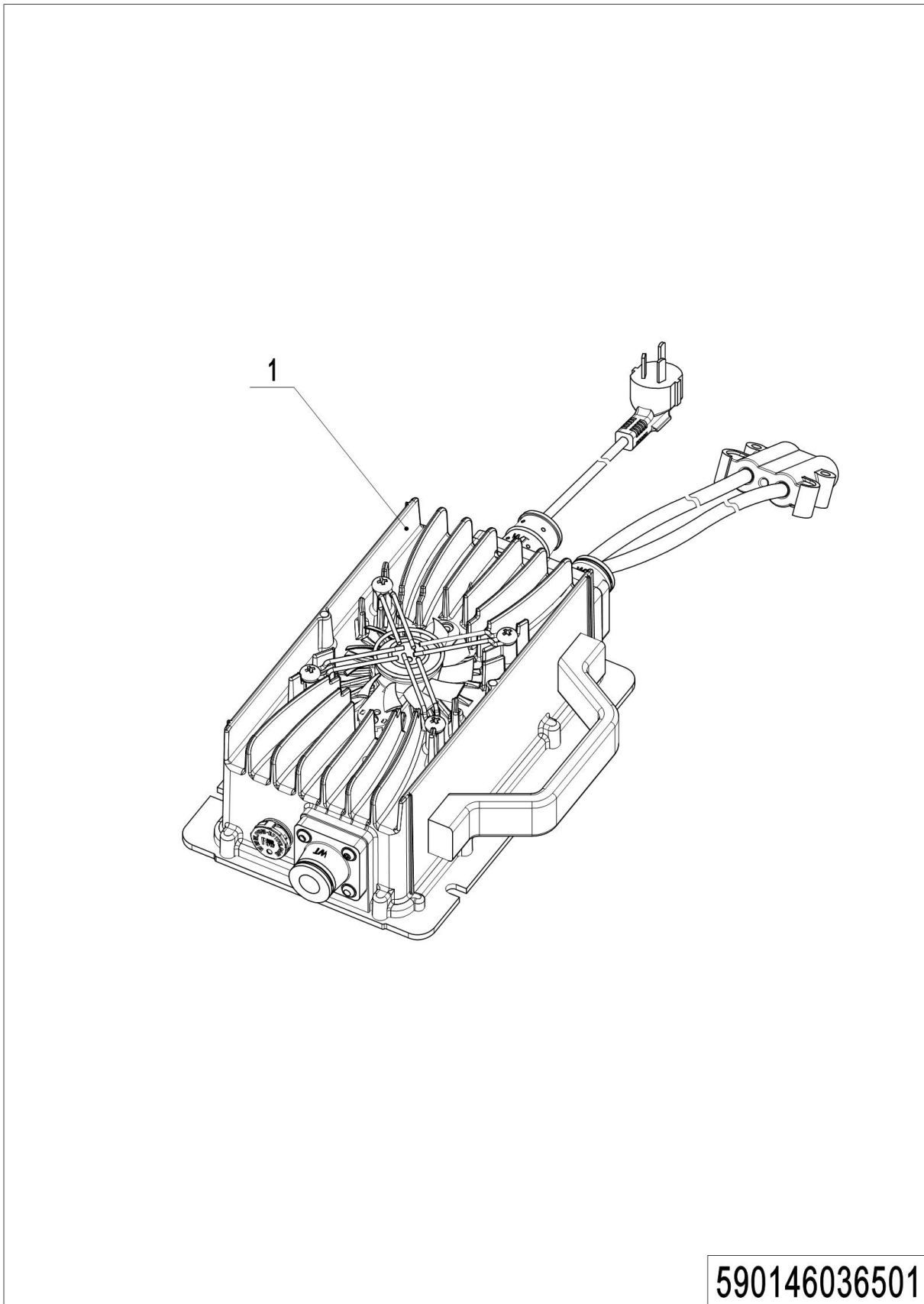
## 02 Electronic control components (590146033001)

No.	Item Code	Mark	Item Description	Qty.	Substitute	Note
1	59019852009		SCREW CYL HD M5×12	8		
2	59019852004		COVER FOR PCBA	1		
3	59019852010		SCREW CYL HD M6×16	2		
4	59019851000		ELECTROMAGNETISM	1		
5	59019852004		SUPPORT FOR PCBA	1		
6	59019852006		NUT HEX SELF LOCKING M5	2		
7	590198520141		CHARGER WIRE	1		
8	590198520101		SCREW PAN HD M3×25	2		
9	59019852010		NUT HEX SELF LOCKING M3	2		
10	59019852004		HOLDER	1		

**03 Traction Battery (590146037001)****590146037001**

## 03 Traction Battery (590146037001)

No.	Item Code	Mark	Item Description	Qty.	Substitute	Note
1	59019852015		BATTERY 12V100AH	2		

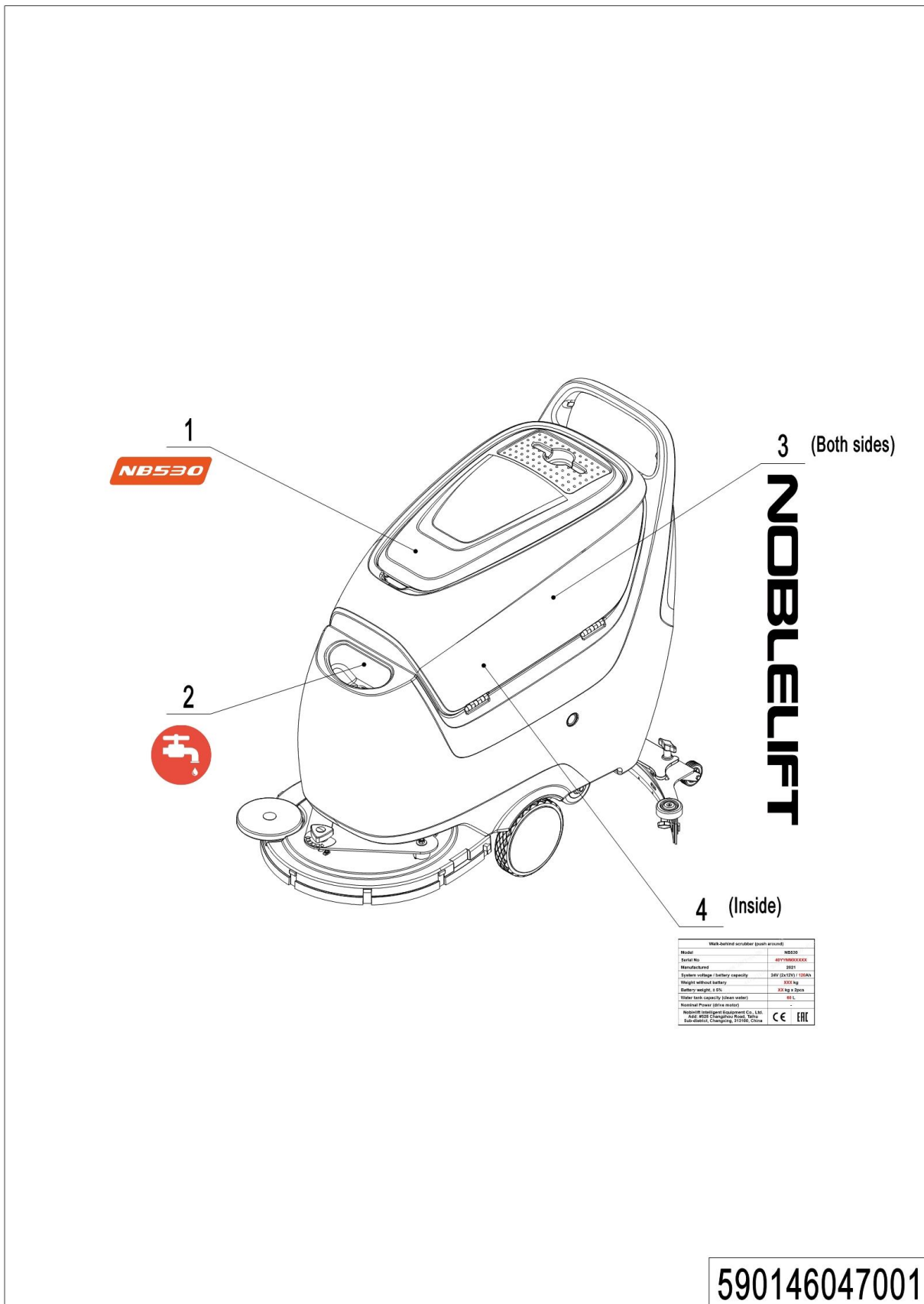
**04 Charger (590146036501)**

## 04 Charger (590146036501)

No.	Item Code	Mark	Item Description	Qty.	Substitute	Note
1	59019852015		CHARGE 24V15A	1		

## Chapter 3 : Others

## 01 Labels and decals (590146047001)



590146047001

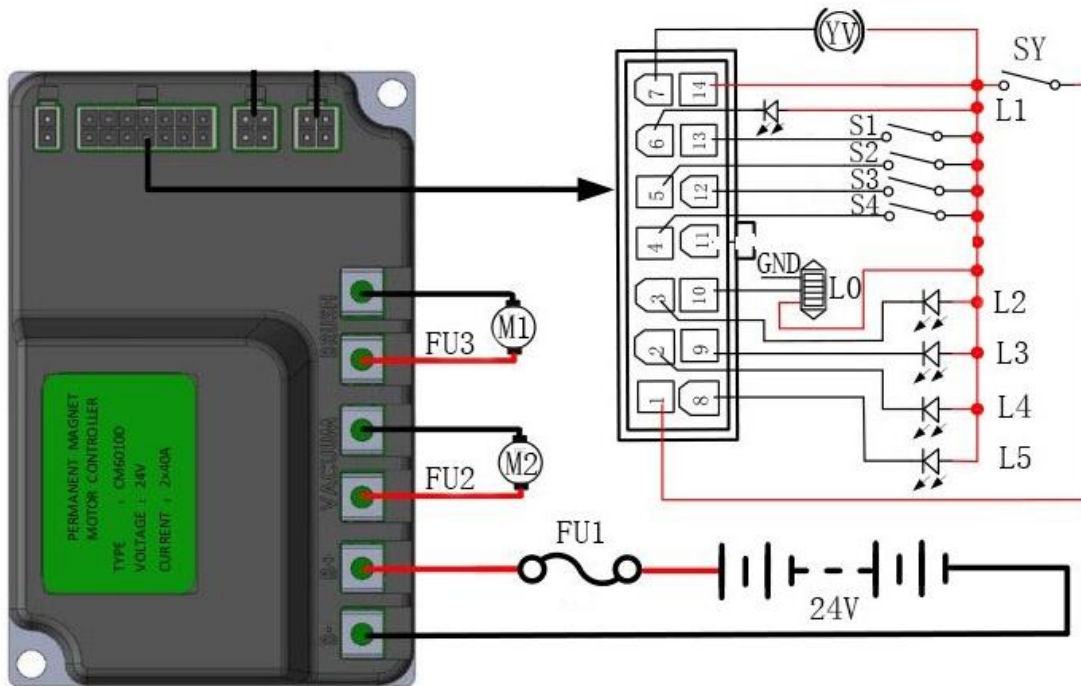


## 01 Labels and decals (590146047001)

No.	Item Code	Mark	Item Description	Qty.	Substitute	Note
1	59014702000		LABLE(NB530)	1		
2	59019852016		LABLE(WATER)	1		
3	59014702000		LABLE(NOBLELIFT)	2		
4	59019852016		DATA PLATE	1		

## Appendix

### 01 Electrical Circuit Diagram ( 590146045501)



M1	Brush Motor	L2	Vacuum motor indicator
M2	Vacuum Motor	L3	Water flow 2
FU1	Fuse 50A	L4	Water flow 3
FU2	Current limit 40A	L5	Water flow 1
FU3	Current limit 40A	S1	Brush removing switch
YV	Water flow control EM valve	S2	Brush motor switch
SY	Key switch	S3	Water flow switch
L0	BDI	S4	Vacuum motor switch
L1	Brush motor indicator		

## 02 Easy Wornout Parts List

No.	Item Code	Item Description	Qty.	Chapter/ Section/ Number
1	59019852012	HINGE	2	Chapter 1/01/01
2	59019852006	SPONGE	1	Chapter 1/01/03
3	59019852001	FLOATING BALL	1	Chapter 1/02/01
4	59019852001	CAGE FOR FLOATING BALL	1	Chapter 1/02/02
5	59019852006	DRAIN HOSE	1	Chapter 1/02/05
6	59019852006	VACUUM HOSE	1	Chapter 1/02/06
7	59019852006	GASKET	1.72	Chapter 1/02/08
8	59039851000	VACUUM MOTOR 24V	1	Chapter 1/02/15
9	59019852003	VIBRATION DAMPING M8	1	Chapter 1/03/07
10	59019851000	REDUCTION GEARMOTRO	1	Chapter 1/03/28
11	59019852004	COUPLING JK	1	Chapter 1/03/29
12	59019852001	BRUSH HOLDER	1	Chapter 1/03/30
13	59019852016	PAD DRIVER	1	Chapter 1/03/34
14	59019852000	WHEEL REVOLVING SS	2	Chapter 1/04/18
15	590198520131	WHEEL	2	Chapter 1/05/07
16	59019852002	SUPPORT FOR SPRING	1	Chapter 1/05/22
17	59019852013	REAR WHEEL	2	Chapter 1/05/34
18	59019851000	SQUEEGEE ASSEMBLY	1	Chapter 1/05/37
19	59019852014	SOLENOID VALVE 24V	1	Chapter 1/06/03
20	59019852013	FILTER	1	Chapter 1/06/05
21	59019852014	SOLUTION TAP	1	Chapter 1/06/07
22	59019852002	WHEEL WITHOUT HUB 8"	2	Chapter 1/07/03
23	59019852015	START SWITCH WITH KEY	1	Chapter 2/01/01

### 03 Consumables list

No.	Item Code	Item Description	Qty.	Chapter/ Section/ Number
1	59019852016	BRUSH	1	Chapter 1/03/34
	590198520171	BRUSH(SOFT)	1	Chapter 1/03/34
	59019852017	BRUSH(HARD)	1	Chapter 1/03/34
2	59019852013	BLADE REAR RUBBER	1	Chapter 1/05/11
	59019852016	BLADE REAR NR	1	Chapter 1/05/11
	59019852016	BLADE REAR PU	1	Chapter 1/05/11
3	59019852013	BLADE FRONT RUBBER	1	Chapter 1/05/31
	590198520161	BLADE FRONT NR	1	Chapter 1/05/31
	59019852016	BLADE FRONT PU	1	Chapter 1/05/31
4	59019852016	WHITE PAD	1	USE WITH PAD DRIVER
	59019852016	RED PAD	1	USE WITH PAD DRIVER
	59019852017	BLACK PAD	1	USE WITH PAD DRIVER