

Print Number :

Print Date :

NOBLELIFT



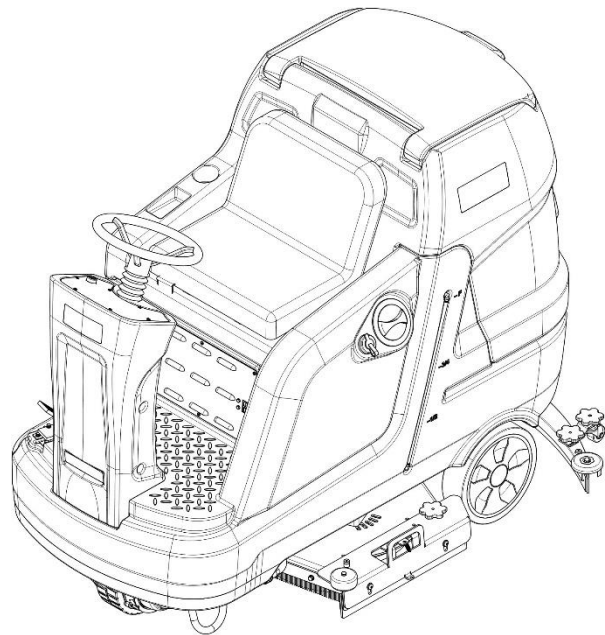
Scan QR Code for More

Rider scrubber

NR1060/860

Parts Manual

590746020101



Version V01

Scrubber Identification Number From:

Parts Manual NR1060-PM01EN

Please order parts from authorized dealers of our company.

In order to avoid wrong delivery, all the orders for spare parts should specify the following items:

- Truck model, identification number and manufacture year.
- Orders for spare parts of mast, hydraulic transmission unit, steering axle, motor, etc. shall indicate the manufacture number of these parts.
- Codes for our company spare parts are shown in the table of parts manual. Please also pay attention to the description of supply status, order quantity, etc. (check the number listed in "Mark" column of the parts manual).

"Mark" Column:

The unmarked indicates the parts are in short supply cycle.

Number 1: supply as package. Indicating these that parts are small parts and seal parts, which are supplied in package unit and in short supply cycle.

Number 2: supply with constraints. Indicating that these spare parts are not in stock and will be prepared for production after receiving the order from customers, which are in long supply cycle.

Number 3: phasing-out supply. Indicating that these parts will be replaced by new parts due to technical improvements and the current stock will not be available when these parts run out. Please check the description of technical improvements notice.

Number 4: supply as assembly. Indicating that these parts are assembly parts defined by manufacture process, which cannot be supplied as a single part.

Number 5: check other tables.

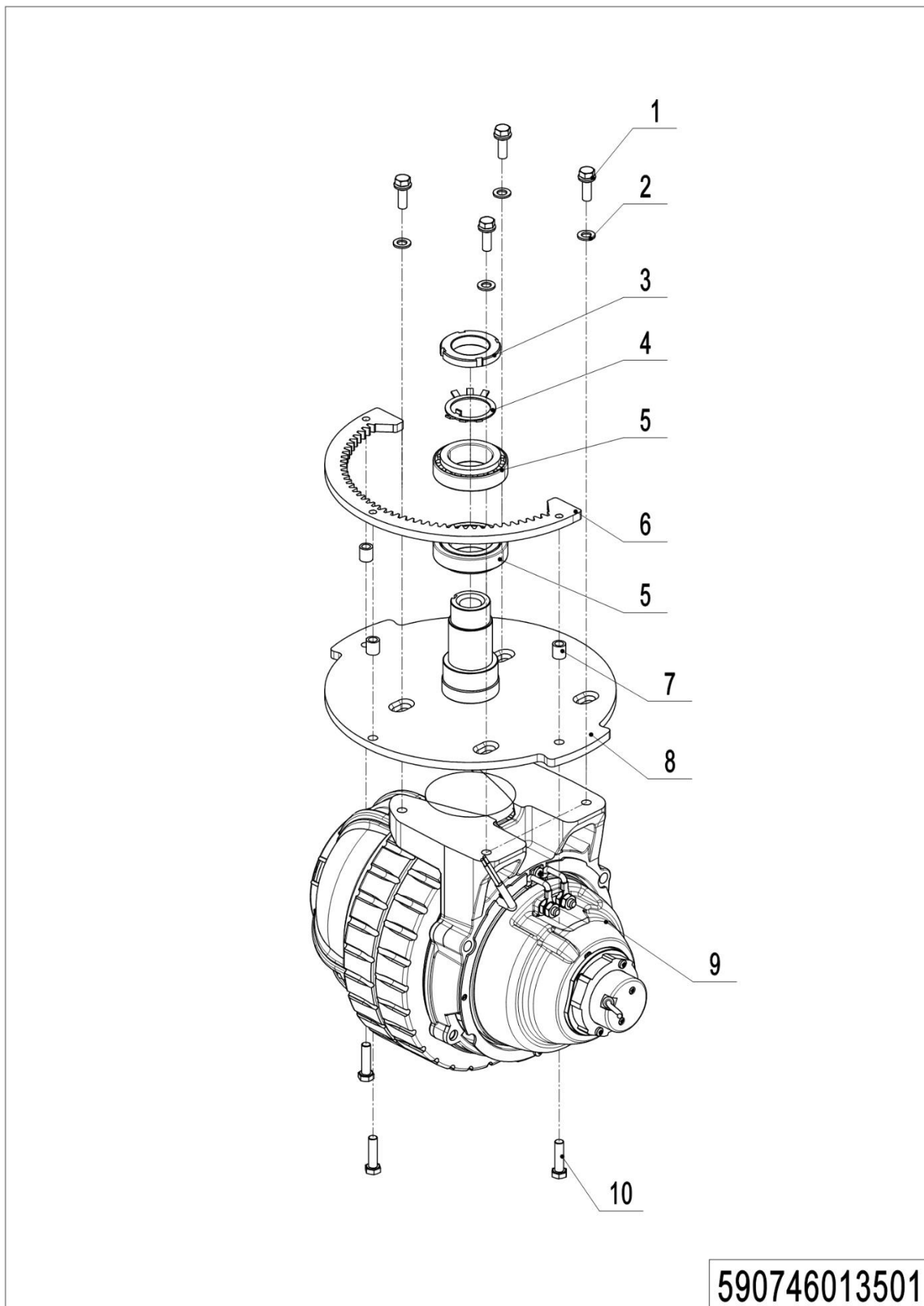
This parts manual is the property of our company and can be shared under the confidential agreement only, our company has the right to claim for compensation of any unauthorized use. Copy without permission is not allowed. Figures in the manual are not limited by the original design. our company reserves the right to improve the products for continuous technology progress.

Table of Contents

Chapter 1: Drive system	1
01 Drive unit (590746013501)	1
Chapter 2: Truck Frame.....	3
01 Solution tank (590746021501).....	3
02 Recovery tank (590746021502)	5
03 Frame (590746017001)	7
04 Brush system (590746021503)	9
04 Brush system (590746021503) continue	11
05 Squeegee system (590746021504)	13
06 Retaining edge (590746021505)	15
07 Solution assembly (590746021506).....	17
08 Wiper frame (590746017002)	19
09 Front body (590746021507)	21
Chapter 3: Electrical parts.....	23
01 Electronic control components (590746033001).....	23
02 Traction Battery (590746037001)	25
03 Charger (590746036501)	27
Chapter 4: Others.....	29
01 Labels and decals (590746047001).....	29
02 Labels and decals (590746047002).....	31
Appendix.....	33
01 Electrical Circuit Diagram (590746045501).....	33
02 Easy Wornout Parts List.....	34
03 Consumable Parts List.....	35

Chapter 1: Drive system

01 Drive unit (590746013501)

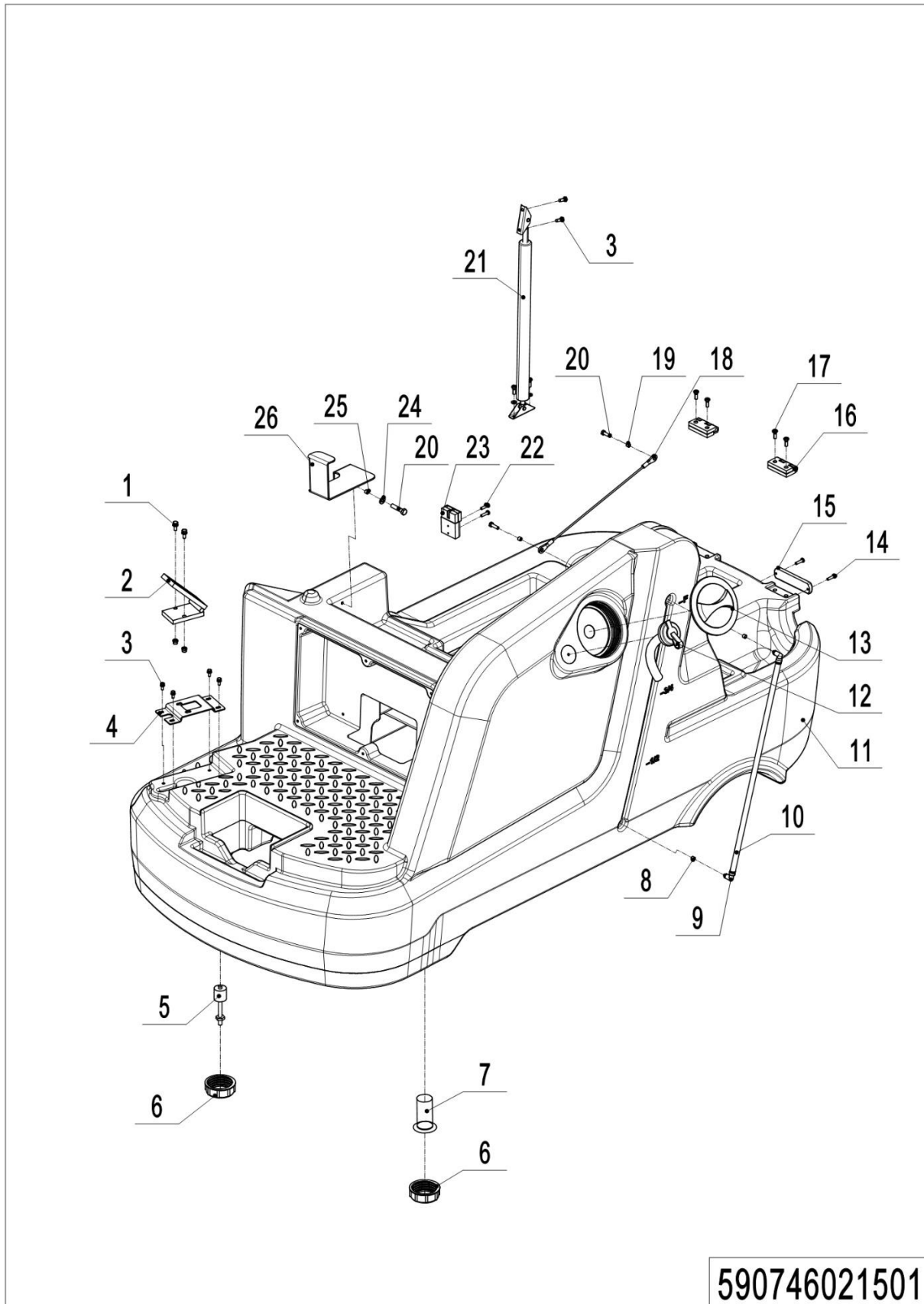


01 Drive unit (590746013501)

No.	Item Code	Mark	Item Description	Qty.	Substitute	Note
1	590198520181		SCREW M10x30 W WASHER	4		
2	59019852007		WASHER SPLIT M10 SS	4		
3	59039852006		NUT M36x1.5	1		
4	59039852005		WASHER M36	1		
5	59039852007		BEARING	2		
6	59079852002		GEAR RING	1		
7	59079852005		SPACER	3		
8	59079852002		SUPPORT FOR DRIVE MOTOR	1		
9	59079851000		DRIVE MOTOR	1		
10	59019852014		SCREW HEX HD M8x30	3		

Chapter 2 : Truck Frame

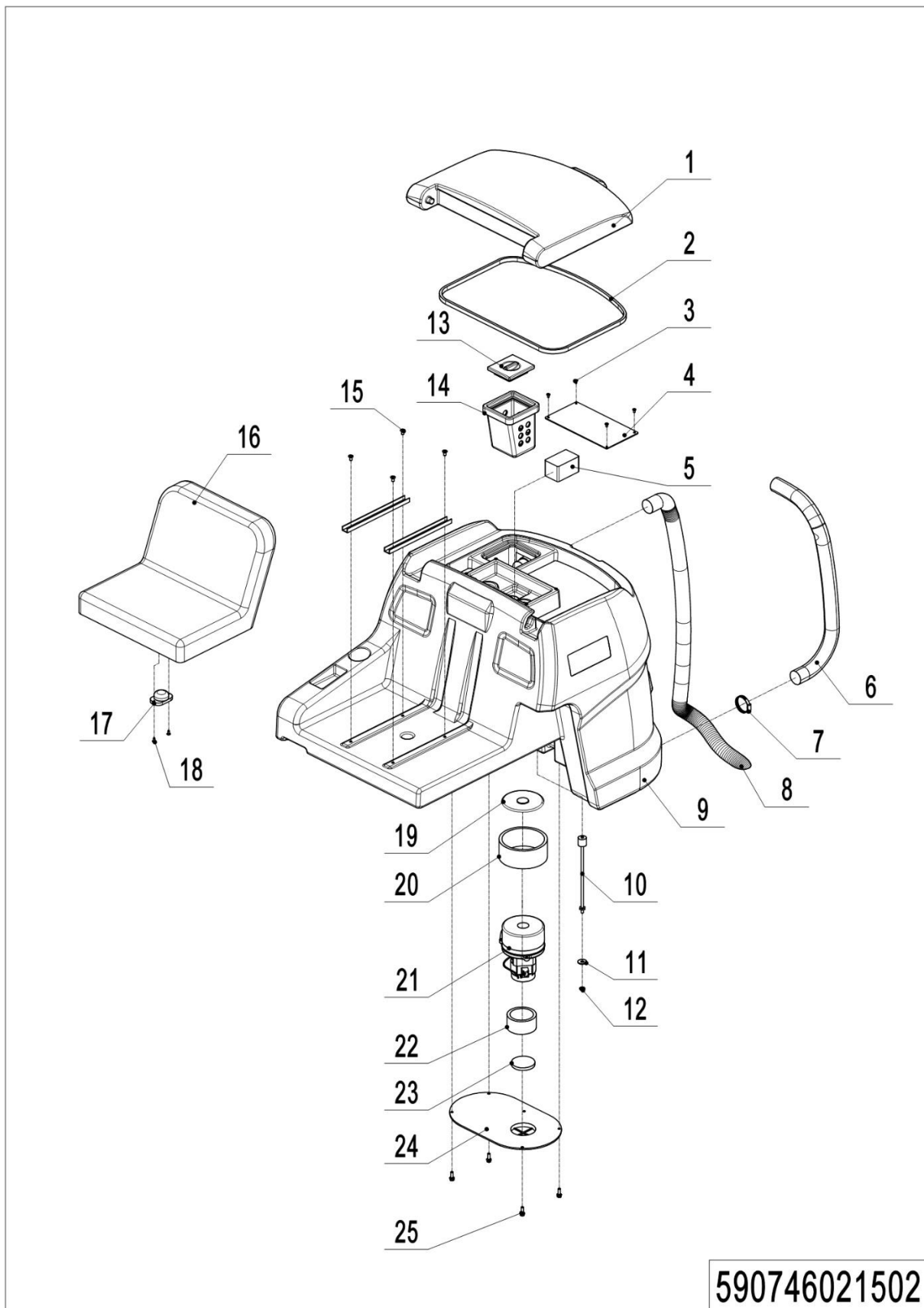
01 Solution tank (590746021501)



1= Supply as package. 2= Supply with constraints. 3= Phasing-out supply. 4= Supply as assembly. 5= Check other tables.

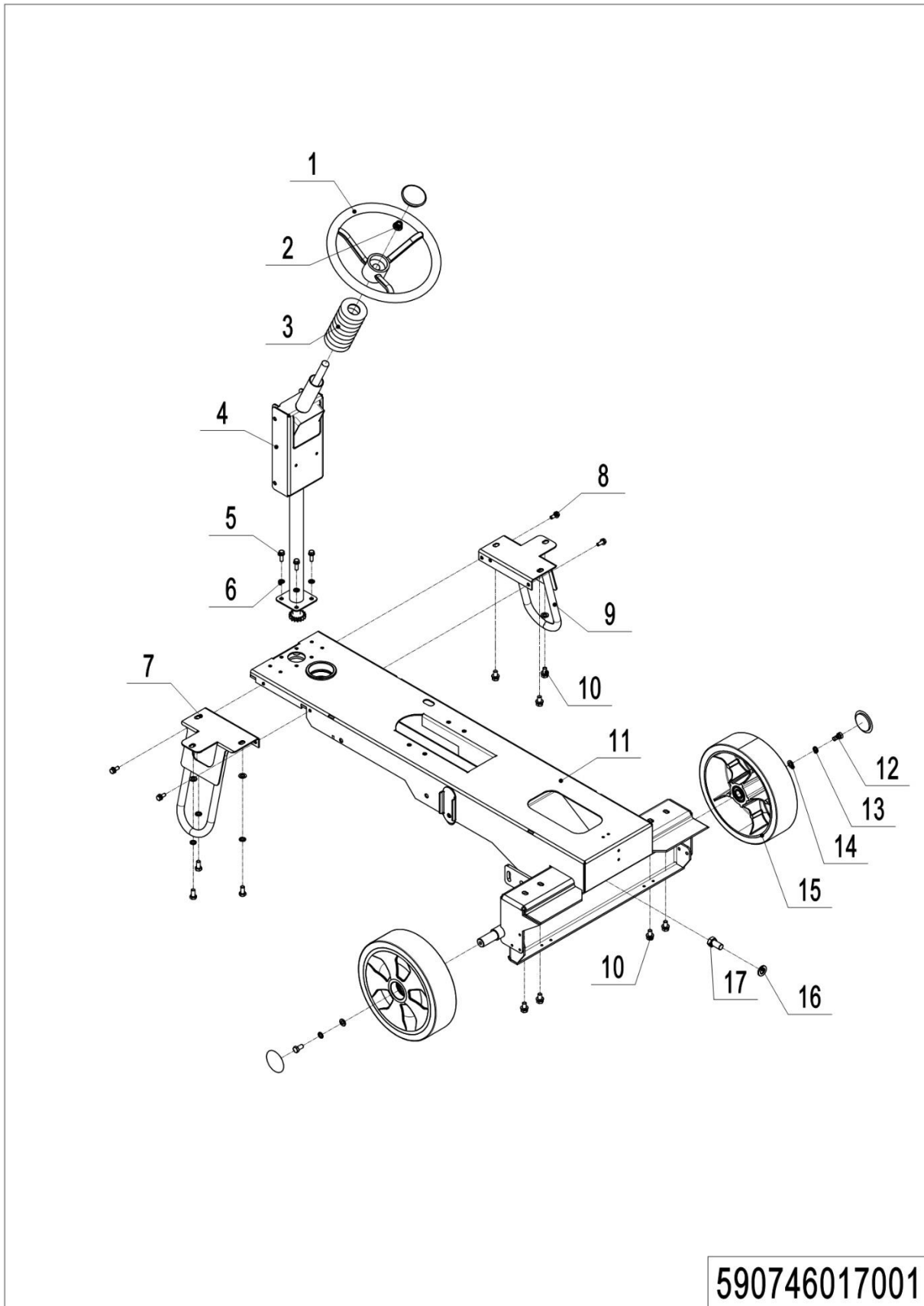
01 Solution tank (590746021501)

No.	Item Code	Mark	Item Description	Qty.	Substitute	Note
1	59019852006		SCREW M8x20 W WASHER	2		
2	59079851000		ACCELERATOR	1		
3	59019852014		SCREW M6x16 W WASHER	8		
4	59079852002		FIXED PLATE	1		
5	59079851000		CLEAN WATER TANK SENSOR	1		
6	59079852000		COVER	2		
7	59079852000		FILTER	1		
8	59019852013		RUBBER PLUG	2		
9	59019852012		L CONNECTOR 8	2		
10	59019852013		HOSE 8	0.6m		
11	59079852000		SOLUTION TANK	1		
12	59049852005		HOSE FOR WATER INJECTION	1		
13	59079852000		COVER	1		
14	59019852009		SCREW CYL HD M4x12	2		
15	59039851001		ALARM LIGHT	1		
16	59079852005		HINGE	2		
17	59019852010		SCREW SOCKET HD M8x16	8		
18	59079852005		CABLE	1		
19	59039852007		SPACER	2		
20	59019852008		SCREW SOCKET HD M6x16	3		
21	59079852005		GAS SPRING	1		
22	59049852008		SCREW CYL HD M5x30	2		
23	59079851000		MAIN POWER CORD	1		
24	59019852007		WASHER FLAT D6xD18	1		
25	59019852003		SPACER D6.5xD10x5	1		
26	59079852003		SUPPORT FRAME	1		

02 Recovery tank (590746021502)

02 Recovery tank (590746021502)

No.	Item Code	Mark	Item Description	Qty.	Substitute	Note
1	59079852001		RECOVERY TANK COVER	1		
2	59019852006		GASKET	1.9m		
3	59039852009		SELF TAPPING SCREW	6		
4	59079852003		BAFFLE	1		
5	59079852003		FILTER COTTON	1		
6	59079852004		DRAIN HOSE	1		
7	59079852005		HOSE CLAMP D46-70	1		
8	59079852004		DIRT SUCTION PIPE	1		
9	59079852001		RECOVERY TANK	1		
10	59079851000		SEWAGE TANK SENSOR	1		
11	59019852008		WASHER FLAT D10xD30x2.5	2		
12	59079852005		NUT M10	1		
13	59079852000		BOX COVER	1		
14	59079852000		GARBAGE FILTER BOX	1		
15	59019852010		SCREW SOCKET HD M8×16	4		
16	59079852003		CHAIR	1		
17	59079851001		SEAT SWITCH	1		
18	59079852008		SELF TAPPING SCREW	2		
19	59019852005		GASKET	1		
20	59019852005		ACOUSTIC INSULATION PIPE	1		
21	59079851000		VACUUM MOTOR	1		
22	59019852005		GASKET	1		
23	59019852005		FILTER FOAM	1		
24	59079852002		FIXED PLATE	1		
25	59019852014		SCREW M6x16 W WASHER	6		

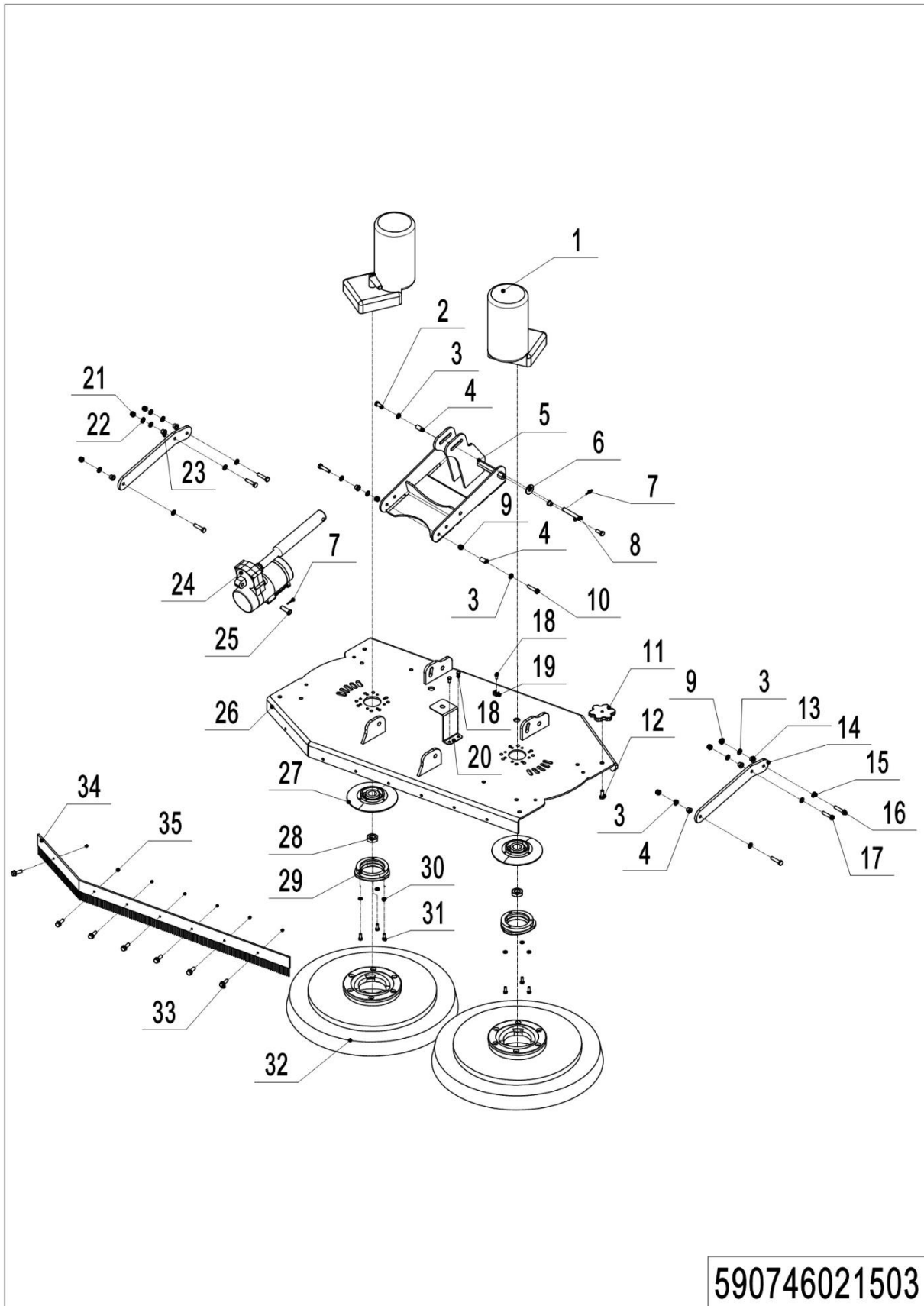
03 Frame (590746017001)

1= Supply as package. 2= Supply with constraints. 3= Phasing-out supply. 4= Supply as assembly. 5= Check other tables.

03 Frame (590746017001)

No.	Item Code	Mark	Item Description	Qty.	Substitute	Note
1	590798520039		STEERING WHEEL COVER	1		
2	590798520058		NUT M16	1		
3	590798520040		RUBBER	1		
4	590798520036		STEERING MECHANISM	1		
5	590398520049		SCREW M8x25 W	4		
6	590198520081		WAHSER FLAT	4		
7	590798520031		LEFT BRACKET	1		
8	590198520069		SCREW M8x20 W	4		
9	590798520032		RIGHT BRACKET	1		
10	590398520050		SCREW M10x20 W	10		
11	590798520016		FRAME	1		
12	590198520126		SCREW HEX HD M10x25	2		
13	590198520073		WASHER SPLIT M10 SS	2		
14	590198520080		WASHER FLAT	2		
15	590798520014		REAR WHEEL	2		
16	590398520086		WAHSER SPLIT M16	1		
17	590398520058		SCREW HEX HD M16x25	1		

04 Brush system (590746021503)



590746021503

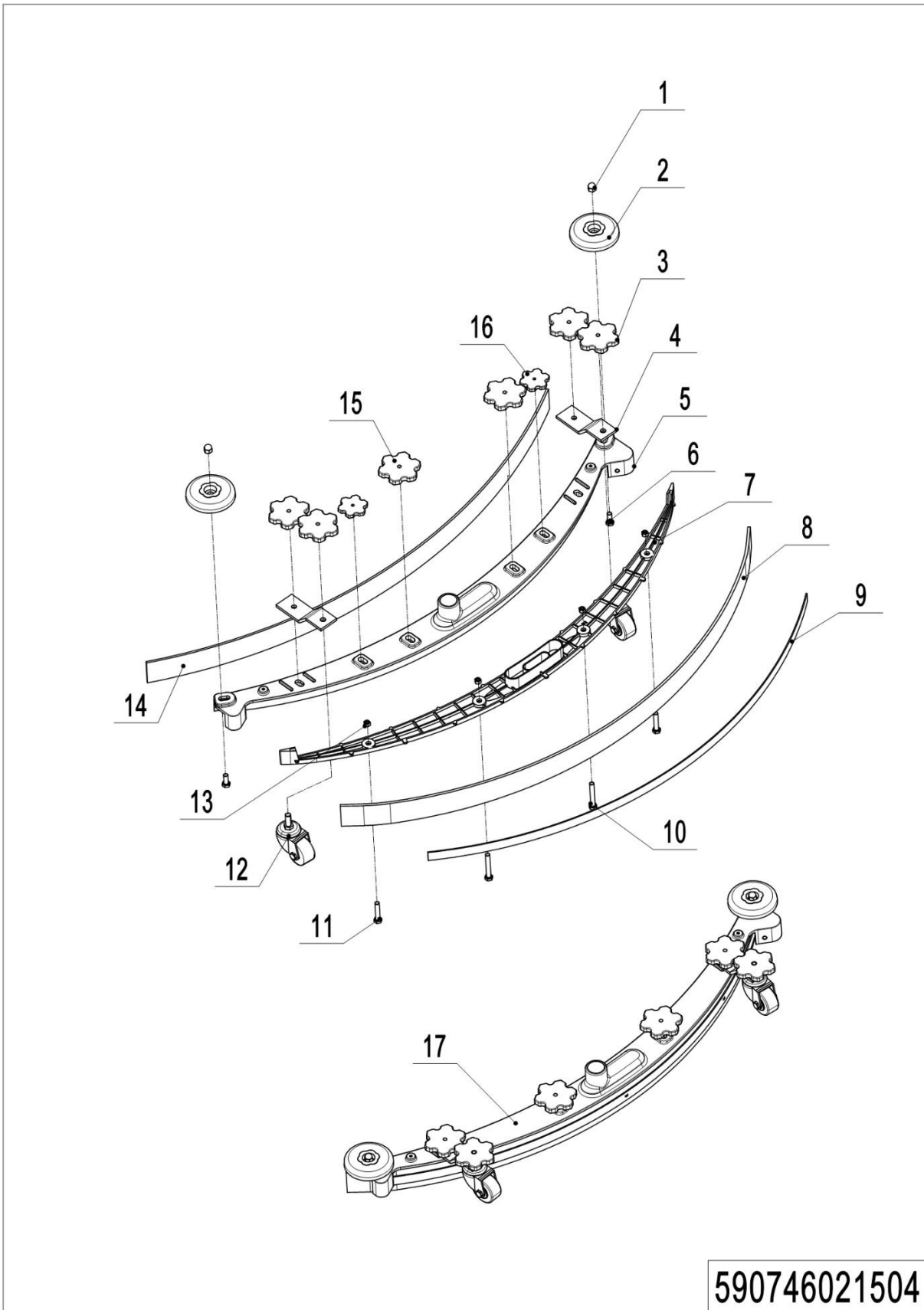
1= Supply as package. 2= Supply with constraints. 3= Phasing-out supply. 4= Supply as assembly. 5= Check other tables.

04 Brush system (590746021503)

No.	Item Code	Mark	Item Description	Qty.	Substitute	Note
1	59079851000		REDUCTION GEARMOTOR	2		
2	590198520181		SCREW M10x30 W WASHER	2		
3	59019852008		WAHSER FLAT D10xD20x2.5	2		
4	59079852011		SPACER D10xD16x10	2		
5	59079852002		LIFT HOLDER	1		
6	59019852008		WASHER FLAT D10xD30x2.5	1		
7	59019852018		SPLIT PIN 3	2		
8	59079852004		SHAFT 10x65	1		
9	59019852006		NUT HEX SELF LOCKING	6		
10	59079852011		SHOULDER SCREW 12x16	2		
11	59019852013		HANDLE	2		
12	59019852015		SCREW HEX HD M8x35	2		
13	59019852001		SPACER	6		
14	59079852002		CONNNECTION ROD	2		
15	59039852008		WASHER FLAT D12xD24x2.5	12		
16	59079852012		SHOULDER SCREW 12x20	4		
17	59019852014		SCREW HEX HD M8x30	2		
18	59019852009		SCREW CYL HD M5x12	4		
19	59019852009		FLAT TIE HOLDER	2		
20	59049852003		HOLDER FOR SOLENOID	1		
21	59019852006		NUT HEX SELF LOCKING	2		
22	59019852010		WASHER D8xD24x2	2		
23	59079852012		SPACER D8xD12x10	2		
24	59079851000		FRONT PUSH MOTOR	1		
25	59079852004		SHAFT 10x55	1		
26	59079852001		BRUSH DISC COVER	1		Use in NR1060
26	59079852007		BRUSH DISC COVER	1		Use in NR860P
27	59019852004		COUPLING JK	2		
28	59039852006		NUT M20x1.5	2		
29	59019852001		BRUSH HOLDER	2		

04 Brush system (590746021503) continue

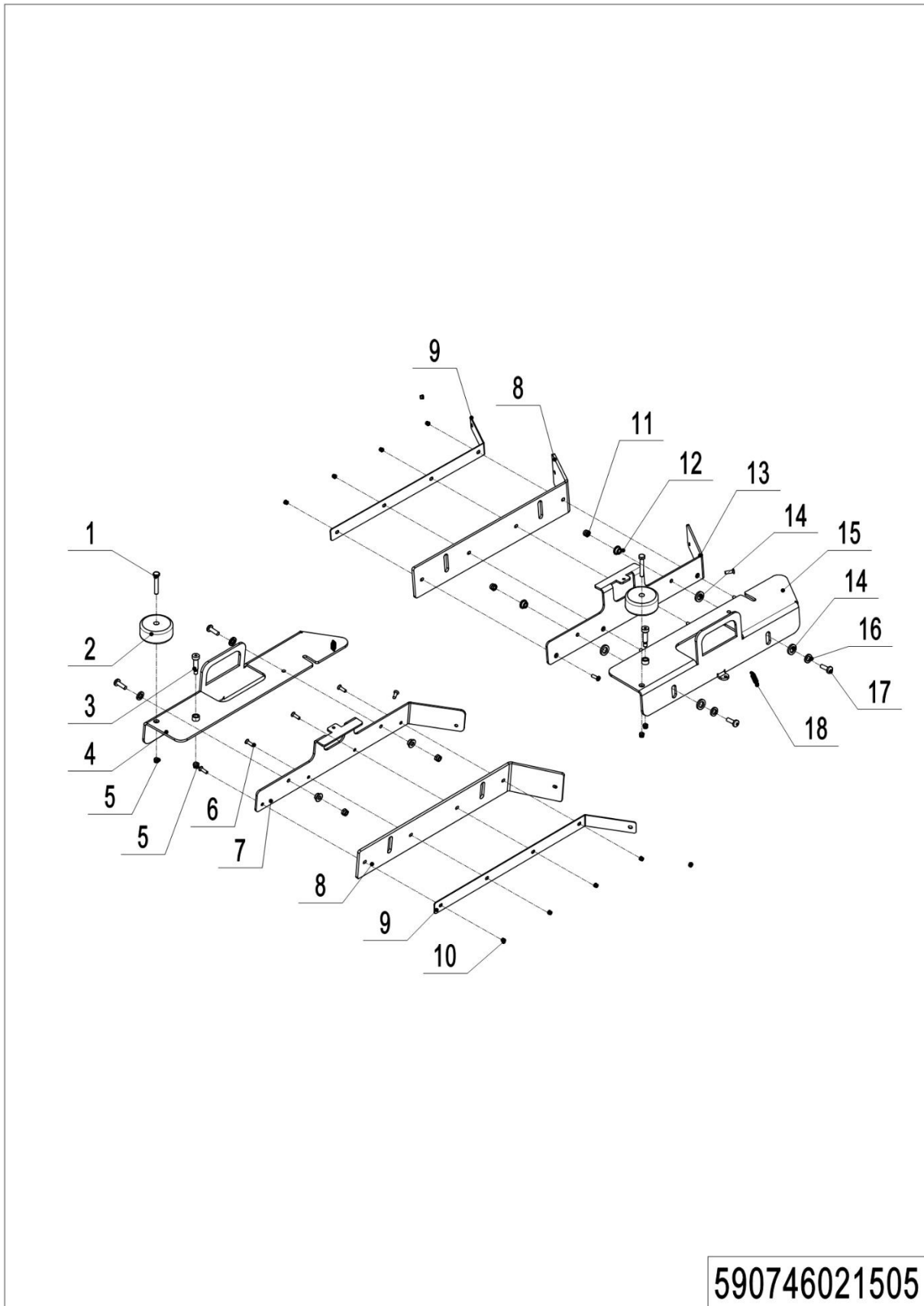
No.	Item Code	Mark	Item Description	Qty.	Substitute	Note
30	59019852007		WASHER SPLIT M6 SS	3		
31	59019852008		SCREW SOCKET HD M6x20	3		
32	59039852009		BRUSH	2		Use in NR1060
32	59039852009		MAGNETIC PAD	2		Use in NR1060
32	59079852011		BRUSH(SOFT)	2		NR1060 PTIONAL
32	59079852011		BRUSH(HARD)	2		NR1060 PTIONAL
32	59079852007		BRUSH	2		Use in NR860
32	59079852007		MAGNETIC PAD	2		Use in NR860P
32	59079852011		BRUSH(SOFT)	2		NR860P OPTIONAL
32	59079852011		BRUSH(HARD)	2		NR860P OPTIONAL
33	59019852014		SCREW M6x16 W WASHER	7		
34	59079852000		BRUSH STRIP	1		Use in NR1060
34	59079852007		BRUSH STRIP	1		Use in NR860P
35	59019852006		NUT HEX SELF LOCKING	7		

05 Squeegee system (590746021504)

1= Supply as package. 2= Supply with constraints. 3= Phasing-out supply. 4= Supply as assembly. 5= Check other tables.

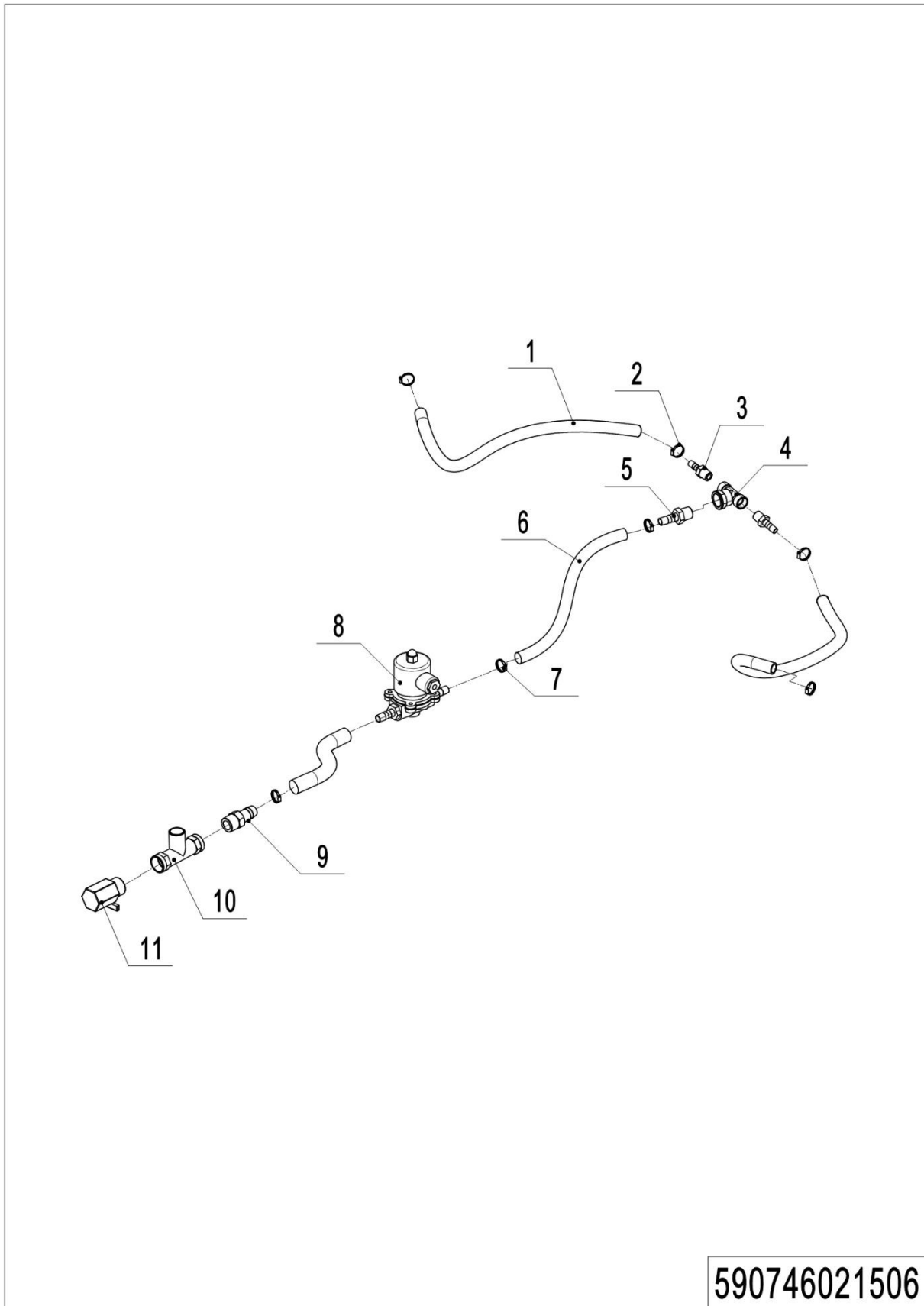
05 Squeegee system (590746021504)

No.	Item Code	Mark	Item Description	Qty.	Substitute	Note
1	59039852006		BLIND NUT M8	2		
2	59079852006		BUMPER ROLLER	2		
3	59079852006		HANDLE	2		
4	59079852006		REAR WHEEL BRACKET	2		
5	59079852006		WIPER	1		
6	59079852006		SCREW HEX HD M8x45	2		
7	59079852006		FLOOR	1		
8	59079852006		BLADE REAR RUBBER	1		
8	59079852011		BLADE REAR NR	1		OPTIONAL
8	59079852011		BLADE REAR PU	1		OPTIONAL
9	59079852006		BATTEN	1		
10	59079852006		SCREW HEX HD M8x70	2		
11	59079852007		SCREW HEX HD M8x60	4		
12	59079852007		BUMPER ROLLER	2		
13	59019852012		NUT M8	6		
14	59079852006		BLADE FRONT RUBBER	1		
14	59079852011		BLADE FRONT NR	1		OPTIONAL
14	59079852011		BLADE FRONT PU	1		OPTIONAL
15	59079852007		HANDLE	2		
16	59079852007		HANDLE	4		
17	59079851001		SQUEEGEE ASSEMBLY	1		

06 Retaining edge (590746021505)

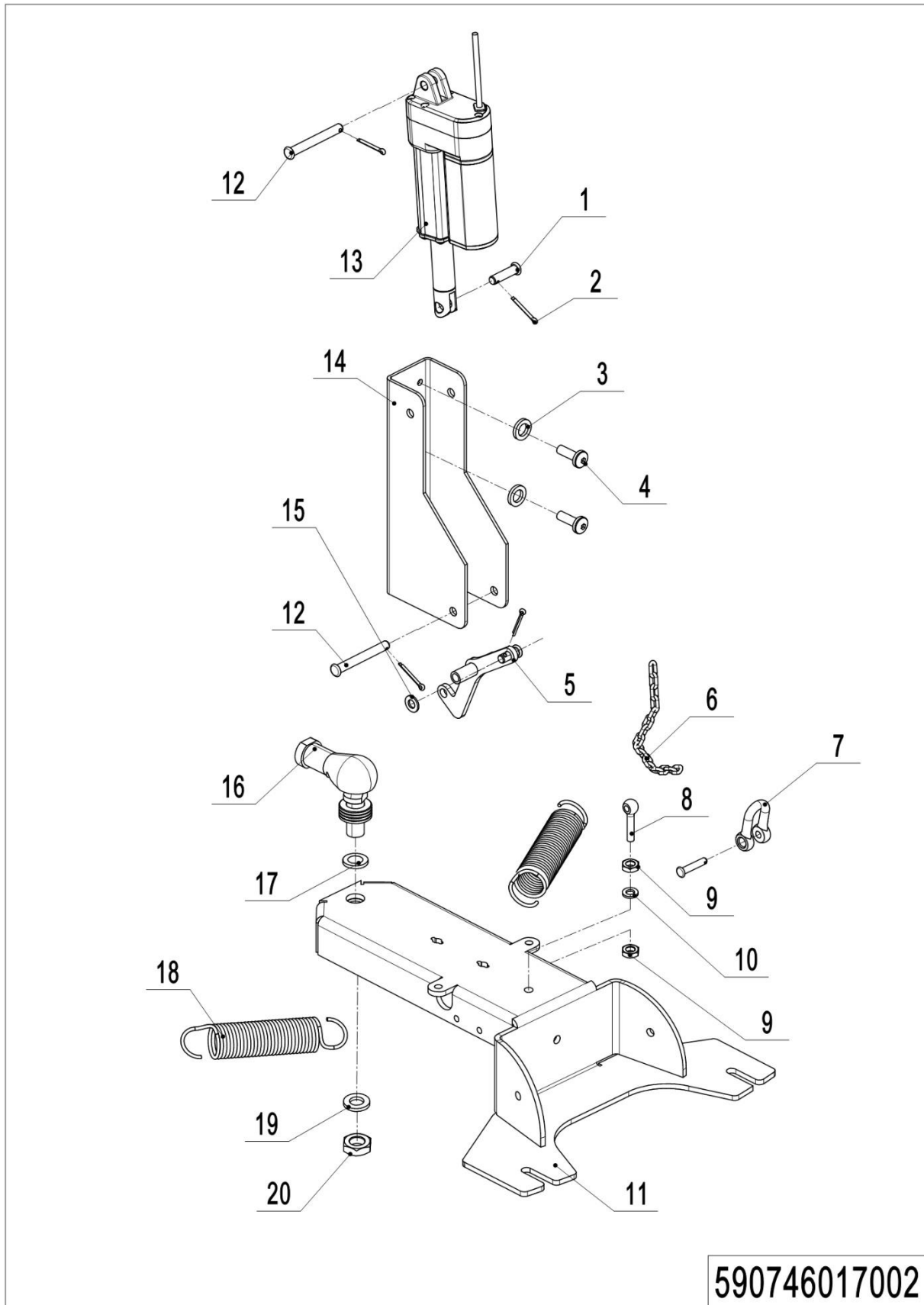
06 Retaining edge (590746021505)

No.	Item Code	Mark	Item Description	Qty.	Substitute	Note
1	59079852005		SCREW SOCKET HD M10x55	2		
2	59079852001		BUMPER ROLLER	2		
3	59079852004		SHOULDER SCREW	2		
4	59079852001		RIGHT SHEET METAL	1		Use in NR1060
4	59079852008		RIGHT SHEET METAL	1		Use in NR860P
5	59019852006		NUT HEX SELF LOCKING	2		
6	59019852014		SCREW SOCKET HD M6x20	12		
7	59079852002		RIGHT FIXING PLATE	1		Use in NR1060
7	59079852008		RIGHT FIXING PLATE	1		Use in NR860P
8	59079852000		RUBBER STRIP	2		Use in NR1060
8	59079852007		RUBBER STRIP	2		Use in NR860P
9	59079852002		BATTEN	2		Use in NR1060
9	59079852008		BATTEN	2		Use in NR860P
10	59019852006		NUT HEX SELF LOCKING	12		
11	59019852006		NUT HEX SELF LOCKING	4		
12	59079852012		SPACER D8xD12x10	4		
13	59079852001		LEFT FIXING PLATE	1		Use in NR1060
13	59079852008		LEFT FIXING PLATE	1		Use in NR860P
14	59019852002		WASHER FLAT D12xD24x2.5	4		
15	59079852001		LEFT SHEET METAL	1		Use in NR1060
15	59079852007		LEFT SHEET METAL	1		Use in NR860P
16	59019852010		WASHER D8xD24x2	4		
17	59019852010		SCREW HEX HD M8x25	4		
18	59079852004		SPRING	2		

07 Solution assembly (590746021506)

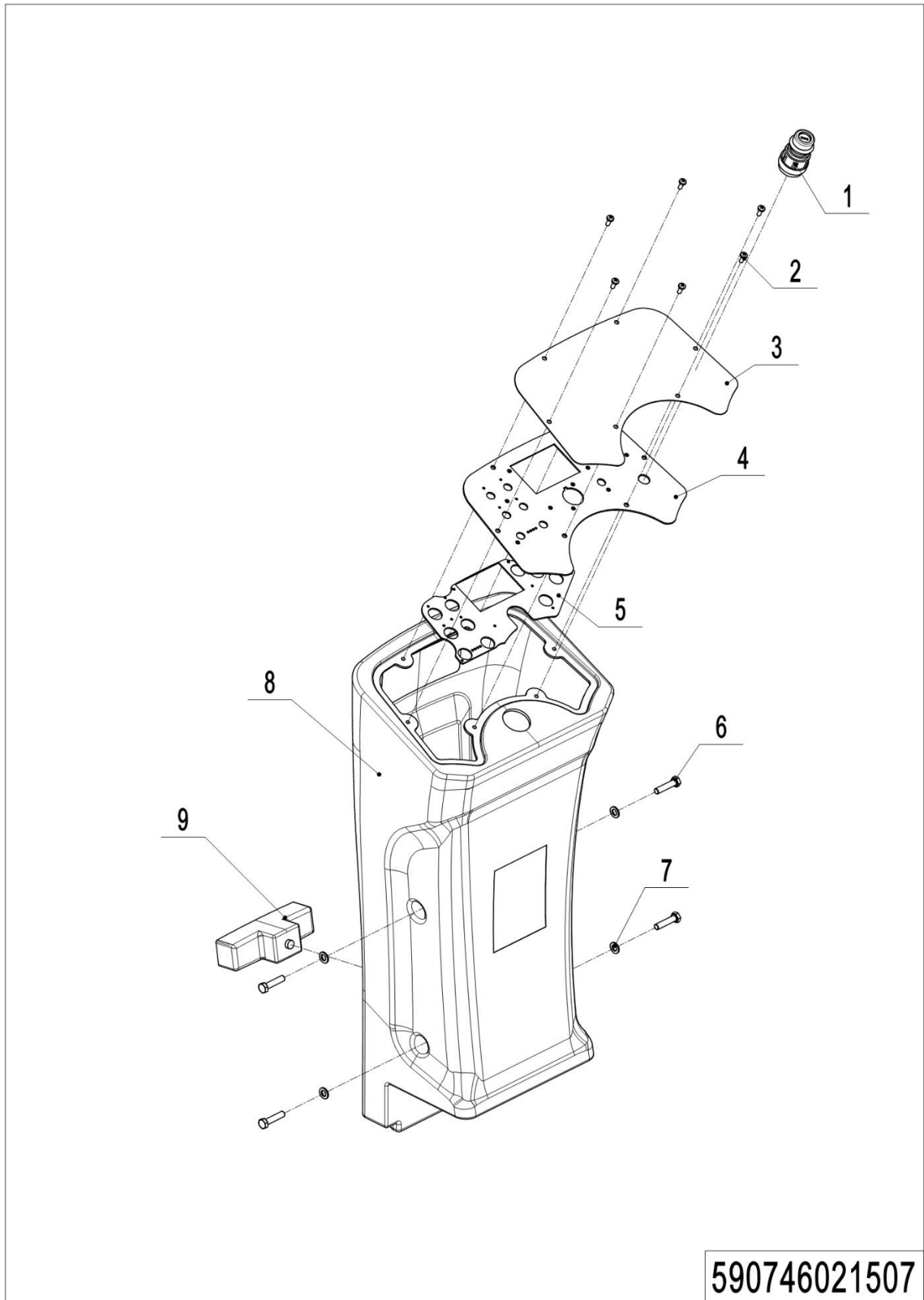
07 Solution assembly (590746021506)

No.	Item Code	Mark	Item Description	Qty.	Substitute	Note
1	59019852006		HOSE PVC	0.8m		
2	59019852009		HOSE CLAMP D13-19	4		
3	59049852013		CONNECTOR Ø12	2		
4	59049852013		T WATER PIPE JOINT	1		
5	59049852001		CONNECTOR Ø19	1		
6	59049852001		HOSE Ø19	1m		
7	59049852007		HOSE CLAMP D19-29	4		
8	59049851000		SOLENOID VALVE 24V	1		
9	59049852014		STRAIGHT PIPE	1		
10	59079852012		THREE-WAY PIPE	1		
11	59049852008		VALVE	1		

08 Wiper frame (590746017002)

08 Wiper frame (590746017002)

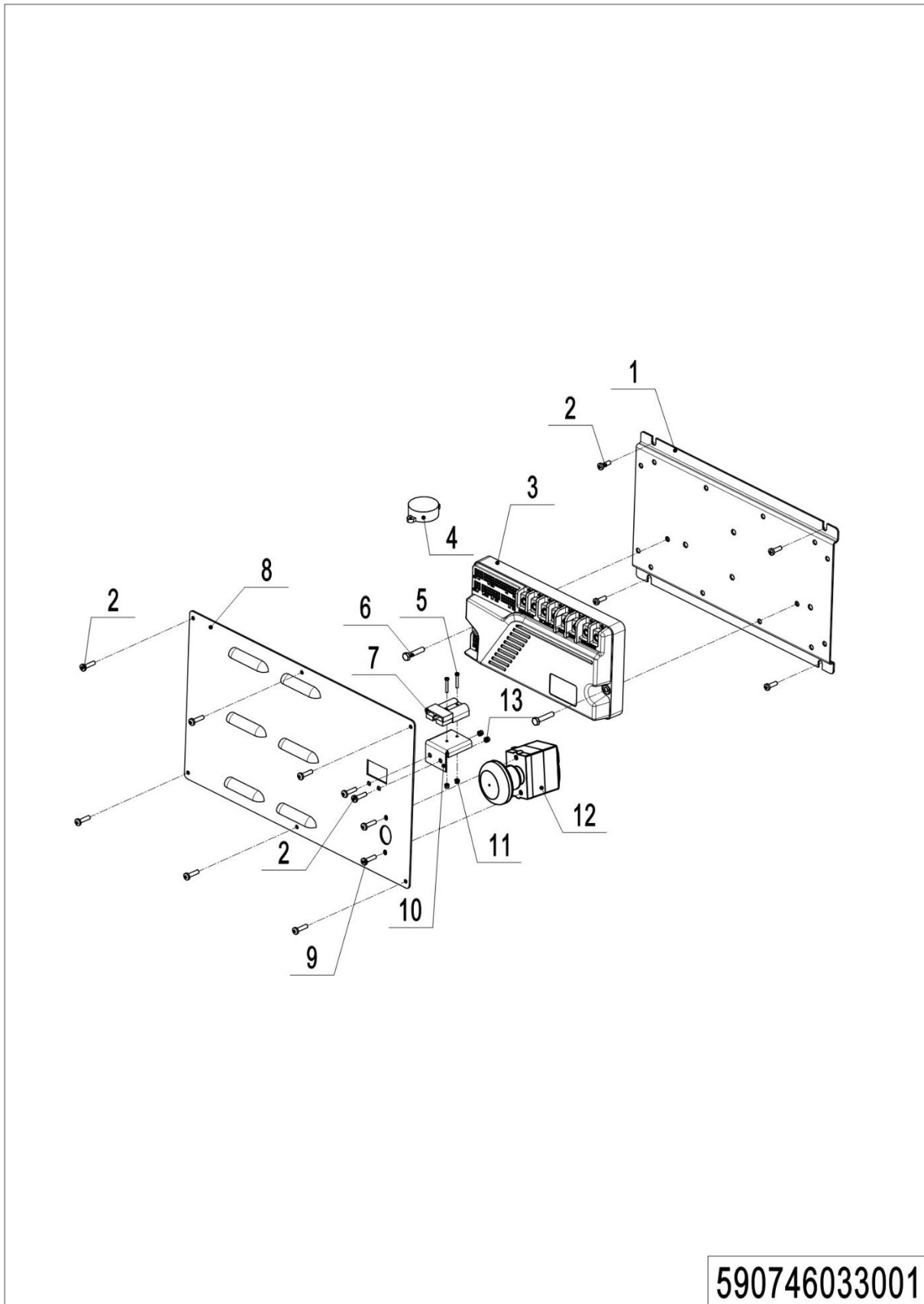
No.	Item Code	Mark	Item Description	Qty.	Substitute	Note
1	59079852005		SHAFT 8x25	1		
2	59019852018		SPLIT PIN 3	4		
3	59039852005		WASHER FLAT D6x20x2	2		
4	59039852004		SCREW M6x20 W WASHER	2		
5	59079852003		CONNNECTION ROD	1		
6	59049852012		CHAIN	0.3m		
7	59049852012		LIFTING RING M6	1		
8	59039852008		EYEBOLT M8x45	1		
9	59019852012		NUT M8	2		
10	59019852007		WAHSER SPLIT M8	1		
11	59079852002		WIPER HOLDER	1		
12	59049852006		SHAFT 8x60	2		
13	59079851000		REAR PUSH MOTOR	1		
14	59079852002		FIX SHEET METAL	1		
15	59019852010		WASHER D8xD24x2	1		
16	59039852006		BALL BARING M16	1		
17	59039852005		WASHER FLAT Ø16	6		
18	59079852004		SPRING	2		
19	59039852008		WAHSER SPLIT M16	2		
20	59039852006		NUT M16	1		

09 Front body (590746021507)

1= Supply as package. 2= Supply with constraints. 3= Phasing-out supply. 4= Supply as assembly. 5= Check other tables.

09 Front body (590746021507)

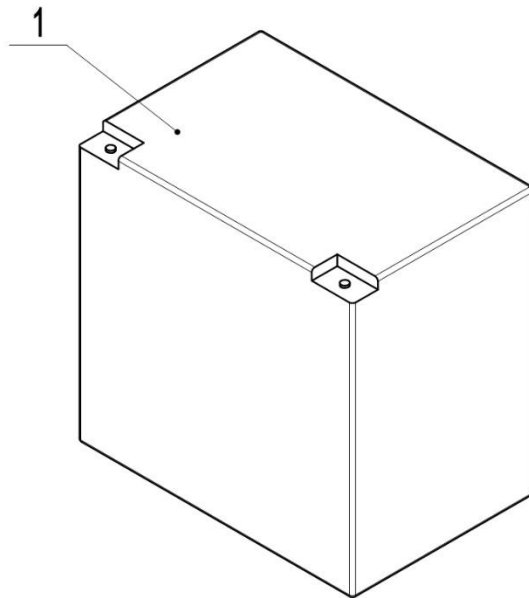
No.	Item Code	Mark	Item Description	Qty.	Substitute	Note
1	59079851001		START SWITCH WITH KEY	1		
2	59019852009		SCREW CYL HD M5x12	6		
3	59079852000		DECAL	1		
4	59079852003		HOLDER	1		
5	590798510011		PCB CONTROL PANEL	1		
6	59049852013		SCREW SOCKET HD M8x35	4		
7	59039852000		WASHER D8xD30x2.5	4		
8	59079852001		FRONT COVER	1		
9	59039851000		LED LIGHT	1		

Chapter 3 : Electrical parts**01 Electronic control components (590746033001)**

01 Electronic control components (590746033001)

No.	Item Code	Mark	Item Description	Qty.	Substitute	Note
1	59039852003		HOLDER	1		
2	59019852009		SCREW CYL HD M5x12	12		
3	59079851001		ELECTRIC BOARD	1		
4	59039852009		BUZZER	1		
5	59039852007		SCREW CYL HD M3x20	2		
6	59019852008		SCREW HEX HD M6x30	2		
7	59079851000		CHARGER WIRE	1		
8	59039852002		COVER	1		
9	59019852009		SCREW PAN HD M5x16	2		
10	59039852003		HOLDER	1		
11	59019852010		NUT HEX SELF LOCKING M3	2		
12	59079851001		EMERGENCY SWITCH	1		
13	59019852006		NUT HEX SELF LOCKING M5	2		

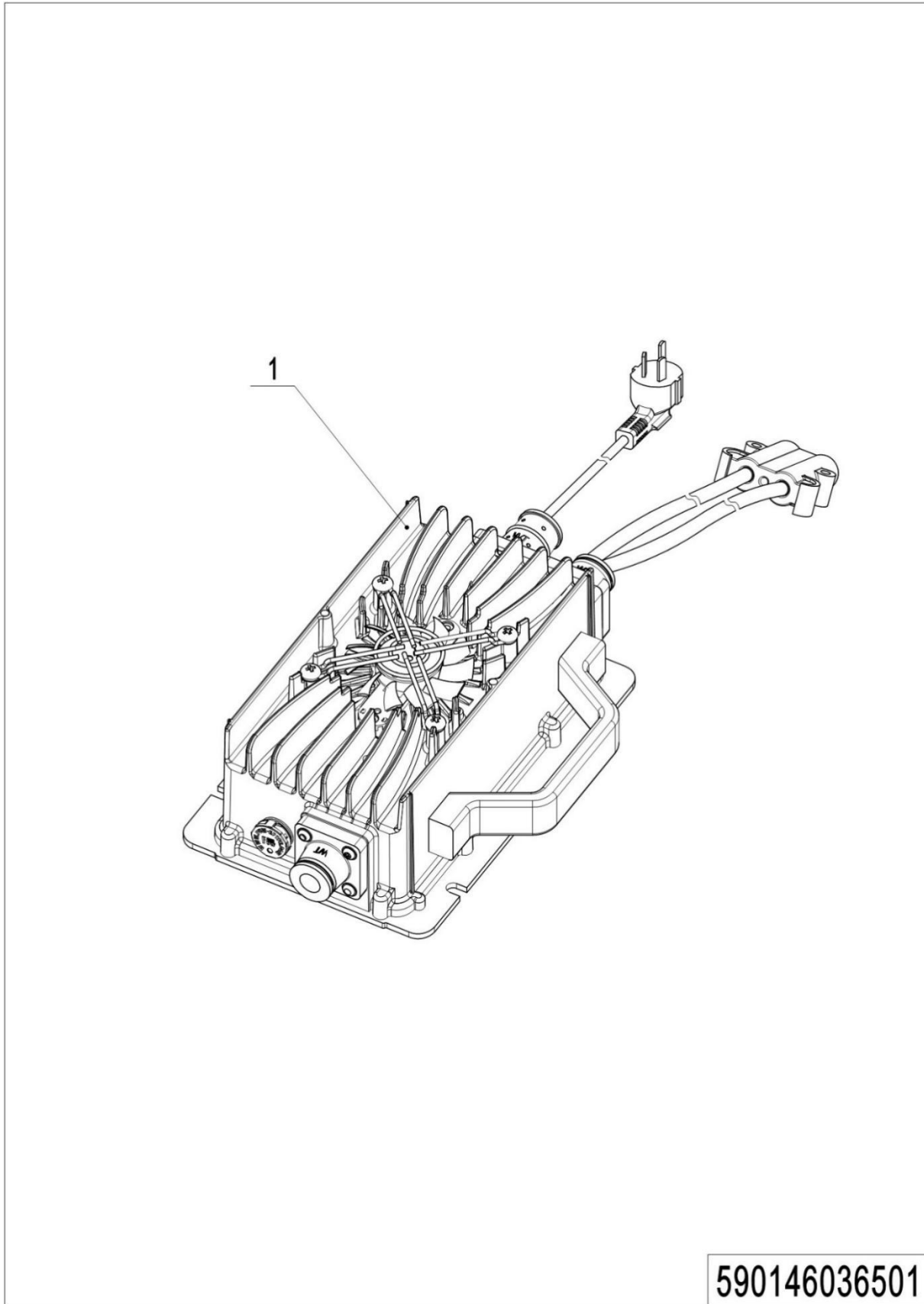
02 Traction Battery (590746037001)



590746037001

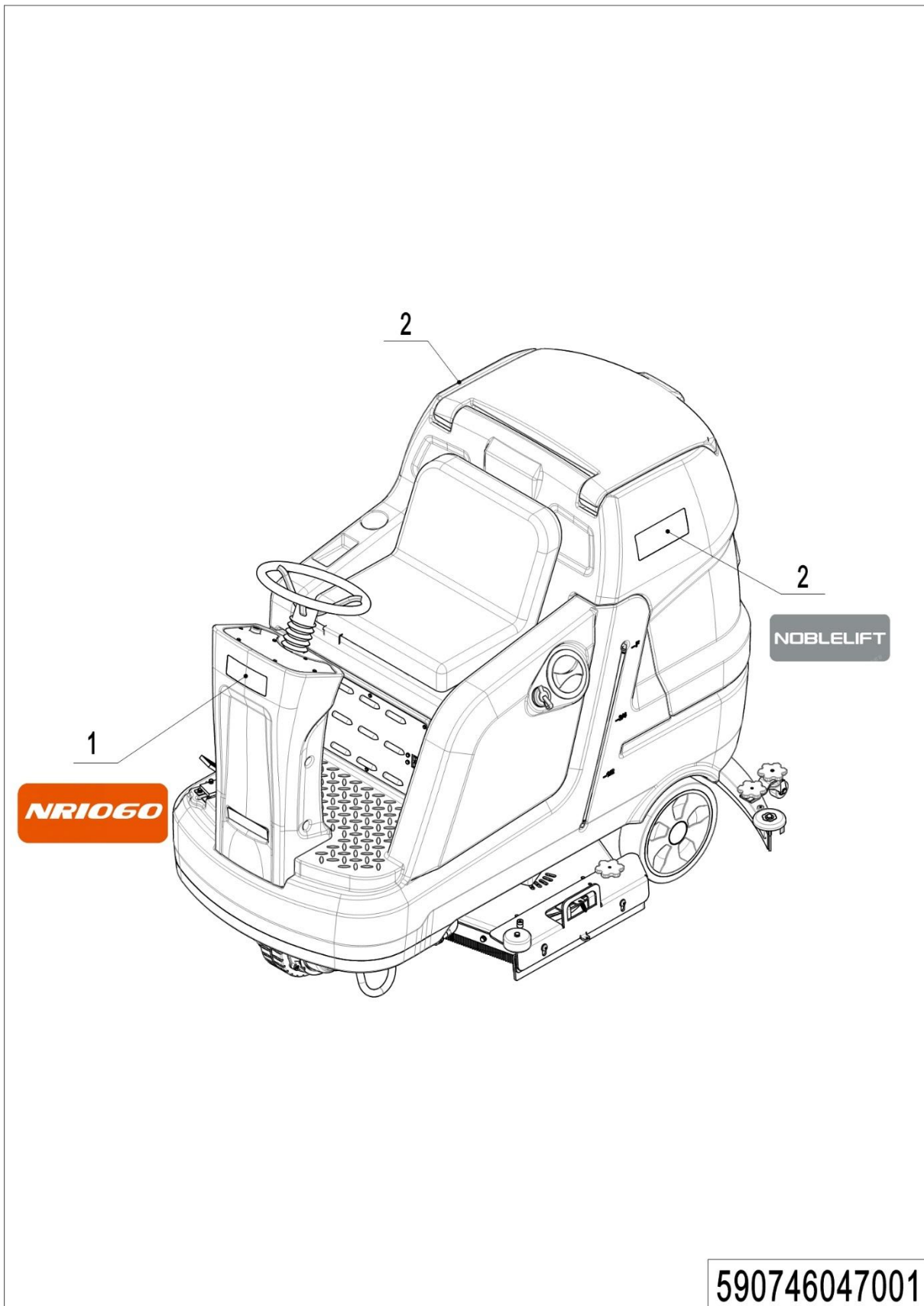
02 Traction Battery (590746037001)

No.	Item Code	Mark	Item Description	Qty.	Substitute	Note
1	59079852010		BATTERY 6V200AH	6		

03 Charger (590746036501)

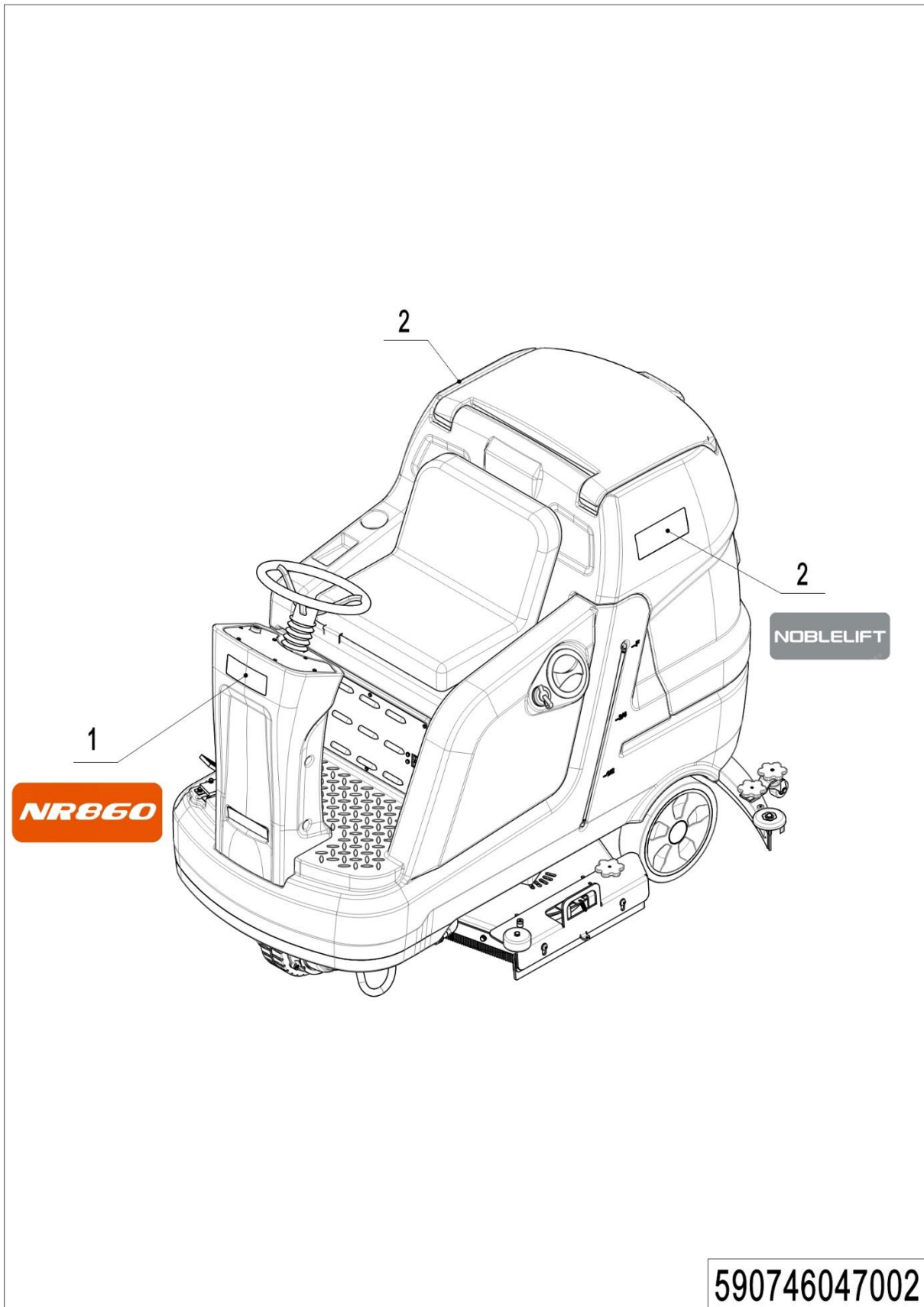
03 Charger (590746036501)

No.	Item Code	Mark	Item Description	Qty.	Substitute	Note
1	59079852010		CHARGE 36V25A(Asia)	1		
1	59079852010		CHARGE 36V25A(ENG)	1		
1	59079852010		CHARGE 36V25A(US)	1		
1	59079852010		CHARGE 36V25A(EU)	1		
1	59079852010		CHARGE 36V25A(AUS)	1		
1	59079852010		CHARGE 36V25A(ITA)	1		
1	59079852010		CHARGE 36V25A(SWE)	1		
1	59079852010		CHARGE 36V25A(ISR)	1		
1	59079852010		CHARGE 36V25A(BRA)	1		

Chapter 4: Others**01 Labels and decals (590746047001)**

01 Labels and decals (590746047001)

No.	Item Code	Mark	Item Description	Qty.	Substitute	Note
1	59074702000		LABLE(NR1060)	1		
2	590498520111		LABLE(NOBLELIFT)	2		

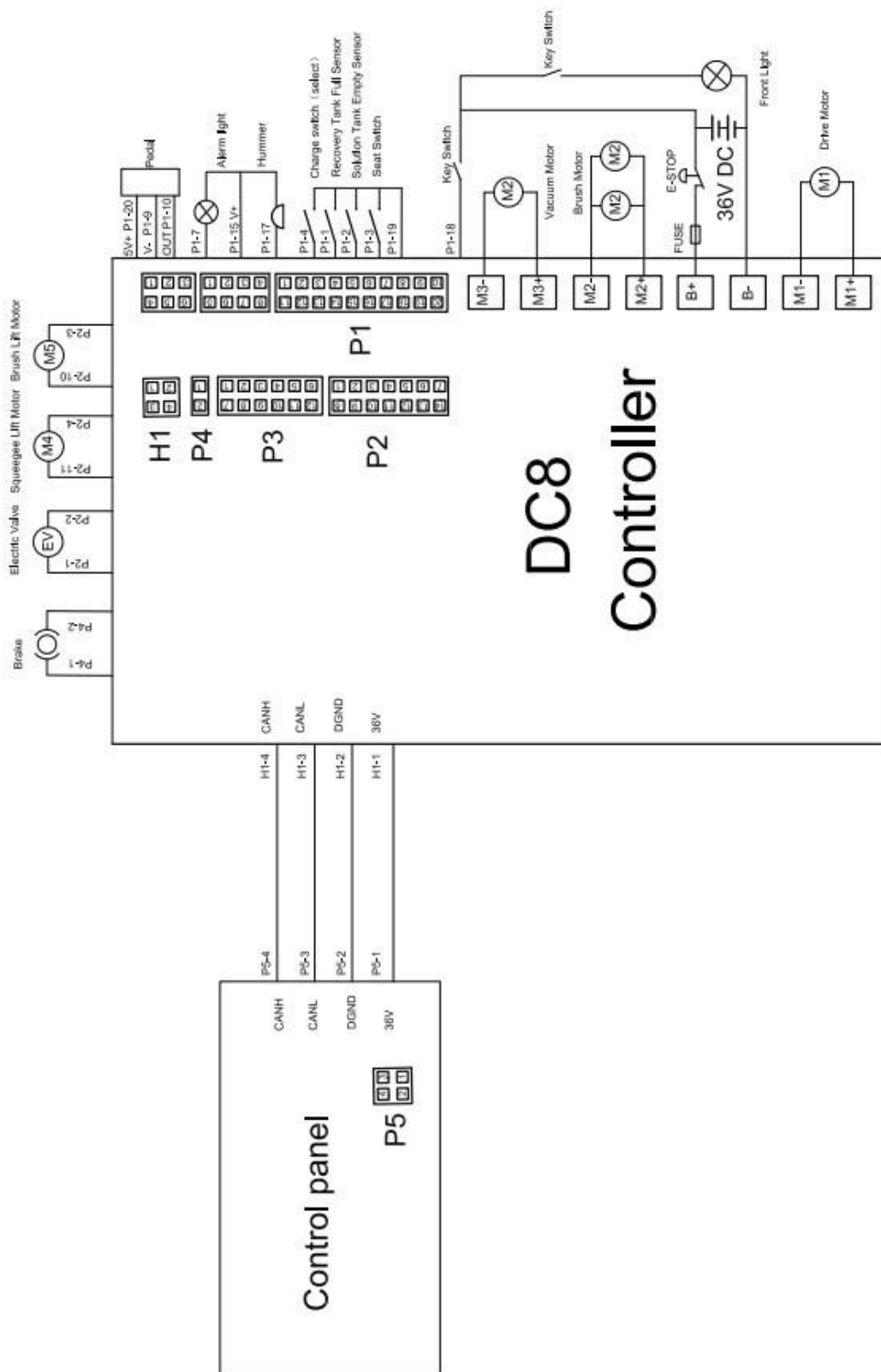
02 Labels and decals (590746047002)

02 Labels and decals (590746047001)

No.	Item Code	Mark	Item Description	Qty.	Substitute	Note
1	59074702000		LABLE(NR860P)	1		
2	590498520111		LABLE(NOBLELIFT)	2		

Appendix

01 Electrical Circuit Diagram (590746045501)



1= Supply as package. 2= Supply with constraints. 3= Phasing-out supply. 4= Supply as assembly. 5= Check other tables.

02 Easy Wornout Parts List

No.	Item Code	Item Description	Qty.	Chapter/ Section/ Number
1	59079851000	ACCELERATOR	1	Chapter 2/01/02
2	59079852000	FILTER	1	Chapter 2/01/07
3	59039851001	ALARM LIGHT	1	Chapter 2/01/16
4	59019852006	GASKET	1.7m	Chapter 2/02/02
5	59079852004	DRAIN HOSE	1	Chapter 2/02/06
6	59079852004	DIRT SUCTION PIPE	1	Chapter 2/02/08
7	59079852003	CHAIR	1	Chapter 2/02/16
8	59079851001	SEAT SWITCH	1	Chapter 2/02/17
9	59079851000	VACUUM MOTOR	1	Chapter 2/02/21
10	59079852003	STEERING WHEEL COVER	1	Chapter 2/03/01
11	59079851000	REDUCTION GEARMOTOR	2	Chapter 2/04/01
12	59079851000	FRONT PUSH MOTOR	1	Chapter 2/04/24
13	59079852006	BUMPER ROLLER	2	Chapter 2/05/02
14	59079852007	BUMPER ROLLER	2	Chapter 2/05/12
15	59079851001	SQUEEGEE ASSEMBLY	1	Chapter 2/05/17
16	59079852001	BUMPER ROLLER	2	Chapter 2/06/02
17	59079852000	RUBBER STRIP	2	Chapter 2/06/08
18	59079852007	RUBBER STRIP	2	Chapter 2/06/08
19	59049851000	SOLENOID VALVE 24V	1	Chapter 2/07/08
20	59079851000	REAR PUSH MOTOR	1	Chapter 2/08/14
21	59079851001	START SWITCH WITH KEY	1	Chapter 2/09/01
22	59039851000	LED LIGHT	1	Chapter 2/09/09
23	59079851001	EMERGENCY SWITCH	1	Chapter 3/01/12

03 Consumable Parts List

No.	Item Code	Item Description	Qty.	Chapter/ Section/ Number
1	59039852008	BRUSH	2	Chapter 2/04/32
	59039852008	MAGNETIC PAD	2	Chapter 2/04/32
	59079852011	BRUSH(SOFT)	2	Chapter 2/04/32
	59079852011	BRUSH(HARD)	2	Chapter 2/04/32
	59079852007	BRUSH	2	Chapter 2/04/32
	59079852007	MAGNETIC PAD	2	Chapter 2/04/32
	59079852011	BRUSH(SOFT)	2	Chapter 2/04/32
	59079852011	BRUSH(HARD)	2	Chapter 2/04/32
2	59079852006	BLADE REAR RUBBER	1	Chapter 2/05/08
	59079852011	BLADE REAR NR	1	Chapter 2/05/08
	59079852011	BLADE REAR PU	1	Chapter 2/05/08
3	59079852006	BLADE FRONT RUBBER	1	Chapter 2/05/14
	59079852011	BLADE FRONT NR	1	Chapter 2/05/14
	59079852011	BLADE FRONT PU	1	Chapter 2/05/14